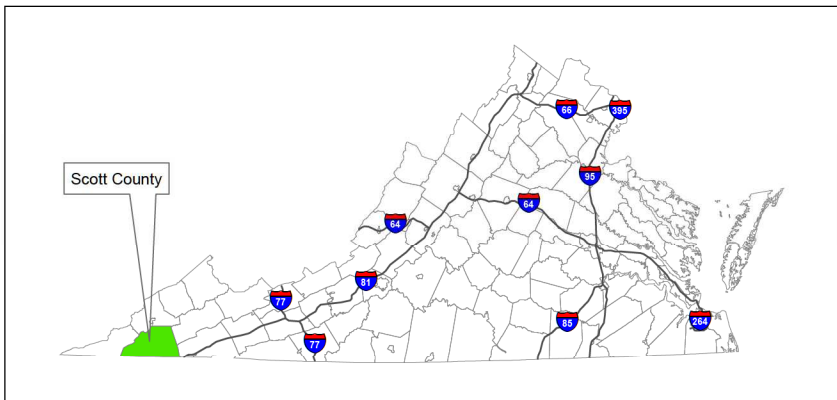


2008 COUNTY ROAD MAP



SCOTT COUNTY
 FORMED IN 1814 FROM LEE, WASHINGTON, AND RUSSELL, NAMED FOR GENERAL WINFIELD SCOTT, LATER COMMANDER OF THE AMERICAN ARMY. THE NATURAL TUNNEL IS IN THIS COUNTY.
 VA. HIST. LANDMARKS COMM. COUNTY SEAT - GATE CITY



- County Facilities/Points of Interest (129) - Map Location Grid**
- Municipal Facilities**
- M1. County Administrative Offices (146)
 - M2. Courthouse (146)
 - M3. Community Services Building (146)
 - M4. Library (146)
 - M5. Landfill (70)

- County School Facilities**
- S1. Scott County School Board Office (146)
 - S2. Duffield Patonville Elementary School (80)
 - S3. Dunganon Intermediate School (28)
 - S4. Fort Blackmore Primary School (52)
 - S5. Gate City High & Middle School (146)
 - S6. Hilton Elementary School (129)
 - S7. Nickelsville Elementary School (73)
 - S8. Rye Cove High School (65)
 - S9. Rye Cove Intermediate School (65)
 - S10. Shaversfork Elementary School (146)
 - S11. Twin Springs High School (146)
 - S12. Yuma Elementary School (145)
 - S13. Scott County Career and Technical Center (147)

- Fire and Rescue Facilities**
- FR1. Duffield Fire & Rescue Station 1 (62)
 - FR2. Duffield Fire & Rescue Station 2 (116)
 - FR3. Duffield Fire & Rescue Station 3 (65)
 - FR4. Dunganon Fire Department (28)
 - FR5. Fort Blackmore Fire Department (52)
 - FR6. Gate City Fire Department (146)
 - FR7. Hilton Fire Department (129)
 - FR8. Nickelsville Fire Department (73)
 - FR9. Nickelsville Rescue Squad (73)
 - FR10. Scott County Rescue Squad (146)
 - FR11. Scott County Rescue Squad - Dunganon Station (28)
 - FR12. Weber City Fire Department Station 1 (147)
 - FR13. Weber City Fire Department Station 2 (144)

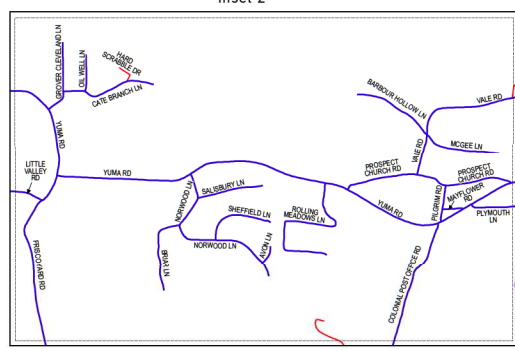
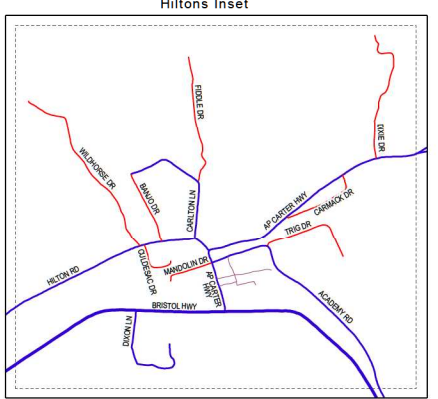
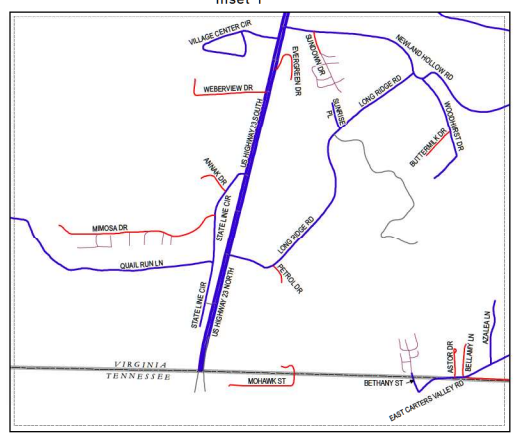
- Recreational Interests**
- R1. Natural Tunnel State Park (81)
 - R2. Bark Camp Lake & Boat Landing (5)
 - R3. Devils Fork Trailhead (23)
 - R4. Falls of Little Stony (7)
 - R5. Hanging Rock Picnic Area (16)
 - R6. Scott County Horse Park (27)
 - R7. Keith Memorial Park (73)
 - R8. Copper Creek Railroad Viaduct (120)
 - R9. Scott County Park and Golf Course (126)
 - R10. Powell Mountain Overlook on SR above Duffield (78)
 - R11. Grogan Park (146)
 - R12. Clinch River Boat Landing, Dunganon (28)
 - R13. Clinch River Boat Landing, Clinchport (100)
 - R14. Clinch River Boat Landing, State Line (158)

- Community Points of Interest**
- C1. Rikemo Lodge (27)
 - C2. The Cove Ridge Center (81)
 - C3. Wilkerson Road Blockhouse (82)
 - C4. Manville Community Center (103)
 - C5. Homestead Mountain Farm and Museum (147)
 - C6. Bush Mill (73)
 - C7. The Carter Fold (130)
 - C8. The Scott County Veterans Memorial (52)
 - C9. Kilgore Fort House (73)

- Legend**
- US 23 Milemarkers
 - Access road
 - Forest Service road
 - State Primary road
 - Private road
 - State Secondary road
 - Town street
 - US Primary road
 - Railroad
 - IndexGrid
 - Rivers
 - National Forest
 - CountyBoundary
 - CorporationLimits

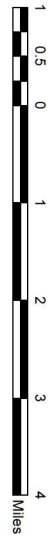
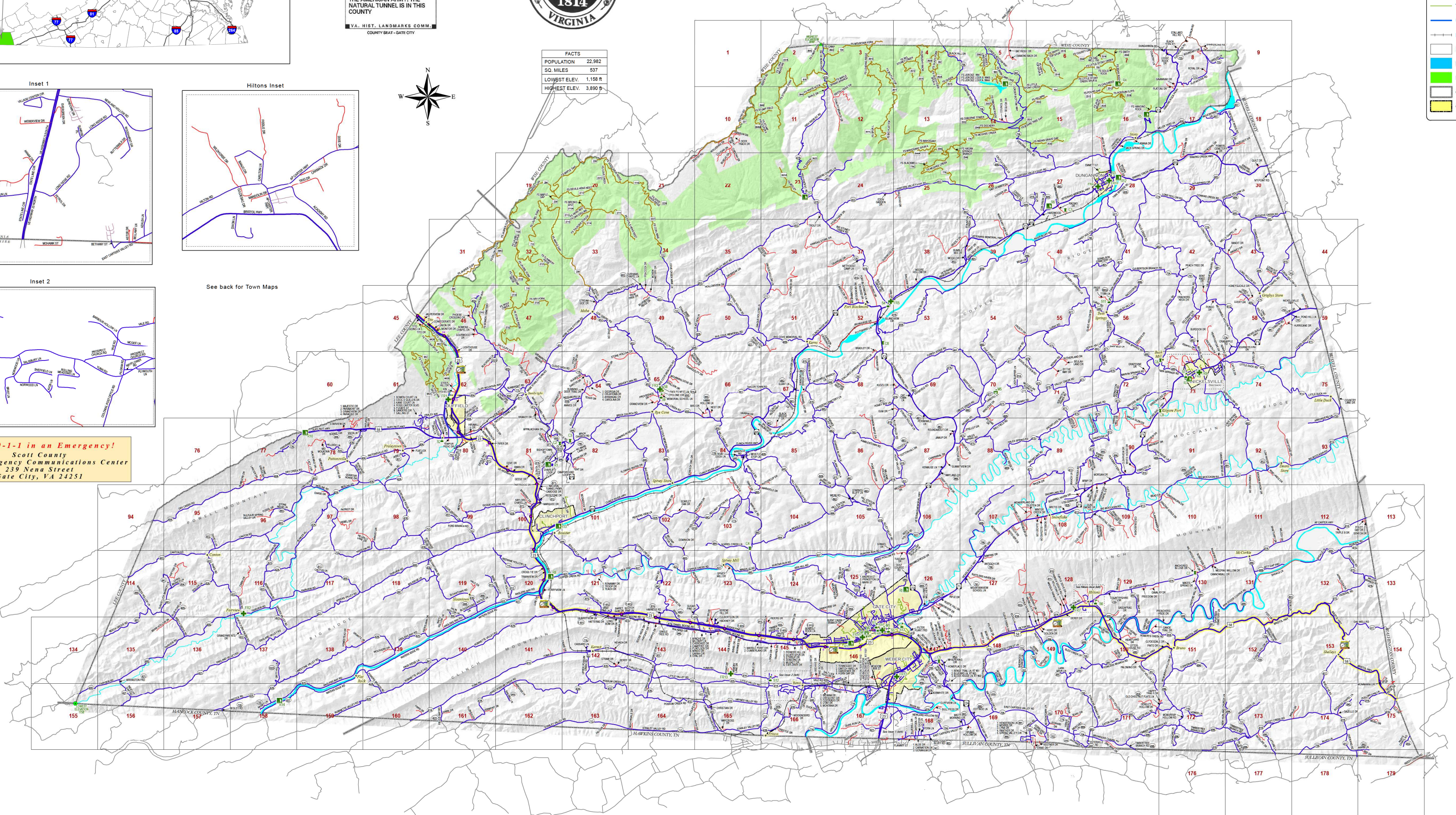
FACTS

POPULATION	22,982
SQ. MILES	537
LOWEST ELEV.	1,158 ft.
HIGHEST ELEV.	3,890 ft.



See back for Town Maps

DIAL 9-1-1 in an Emergency!
 Scott County
 9-1-1 Emergency Communications Center
 239 Nena Street
 Gate City, VA 24251



DISCLAIMER
 The information shown on the map from the Scott County Geographic Information System database is NOT to be construed or used as a "legal description". Map accuracy is not guaranteed. In no event will Scott County, its elected or appointed officials or employees be liable for any damages, including business interruption, loss of data, profits, or business information, or other pecuniary loss that might arise from the use of this map or the information it contains.