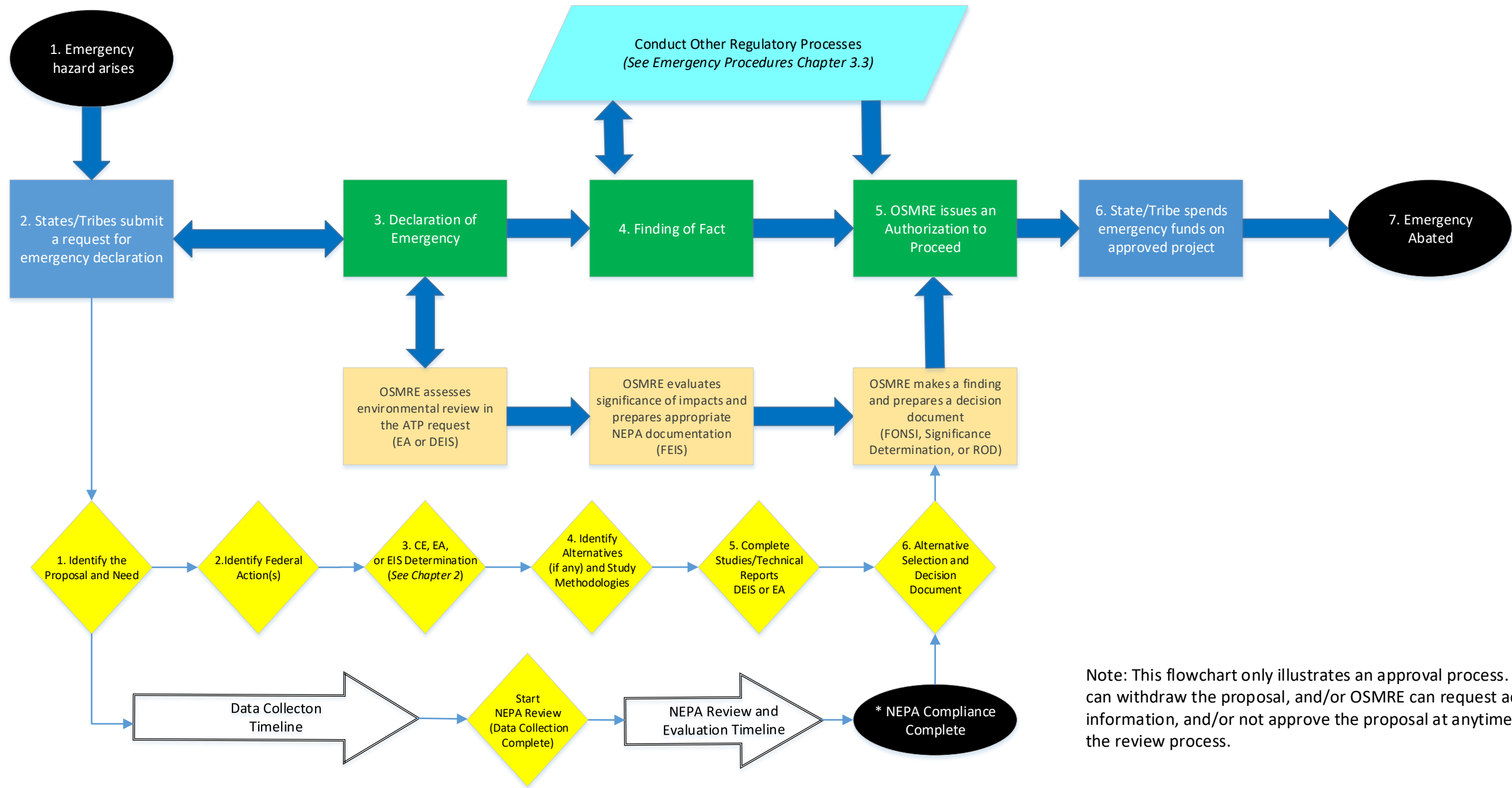


APPENDIX 4.2-6 Emergency AML Reclamation Process

Note depending on the emergency and danger, the NEPA evaluation can be deferred in order to provide immediate assistance as needed. (See Chapter 2 for more information)

Legend

- Beginning or End Point
- ➡ Task Direction Arrows
- ↔ Iterative Task Direction Arrows
- ▭ State or Tribal Program Responsibility
- ▭ OSMRE Program Responsibility
- ▭ OSMRE NEPA Review Tasks
- ▭ OSMRE Tasks for Other Regulatory Processes
- ◆ Milestone and Decisions Points
- ➡ NEPA Schedule Guide
- ➡ Guidelines for Milestones and Decisions Point Timing (Note: Approximately located as a sliding scale based on specific project circumstances)



Note: This flowchart only illustrates an approval process. An applicant can withdraw the proposal, and/or OSMRE can request additional information, and/or not approve the proposal at anytime throughout the review process.