

TIPS Autodesk AutoCAD Map 2020 Installation Instructions – INSTALLING ON INDIVIDUAL COMPUTERS

Getting Started

- All TIPS users must install the latest K2Client (KeyClient) on their machine prior to installing new software versions. This is a requirement of the TIPS program to allow for adequate collection of license and server usage statistics. The latest KeyClient is available on the TIPS website <https://www.tips.osmre.gov/software/downloads.shtm>.
- Before starting the AutoCAD Map installation process, you will need the following:
 - 2020 AutoCAD Map 3D Software files. These can be downloaded via the Autodesk Virtual Agent website at <https://ava.autodesk.com/> - use the interactive “AVA” to find the files for download. If you are unable to download the installation file, please contact your TIPS Service Manager and they will provide you with a USB drive.
 - Serial number, product key, and environment variable information provided with the TIPS CAD software distribution (obtained from your TIPS Service Manager).
 - The recommended program installation requires approximately 3 GB of disk space on each user computer (using default program installation settings).
 - **Administrator credentials are required for product installation.**
 - TIPS recommends that all antivirus services be disabled during installation.

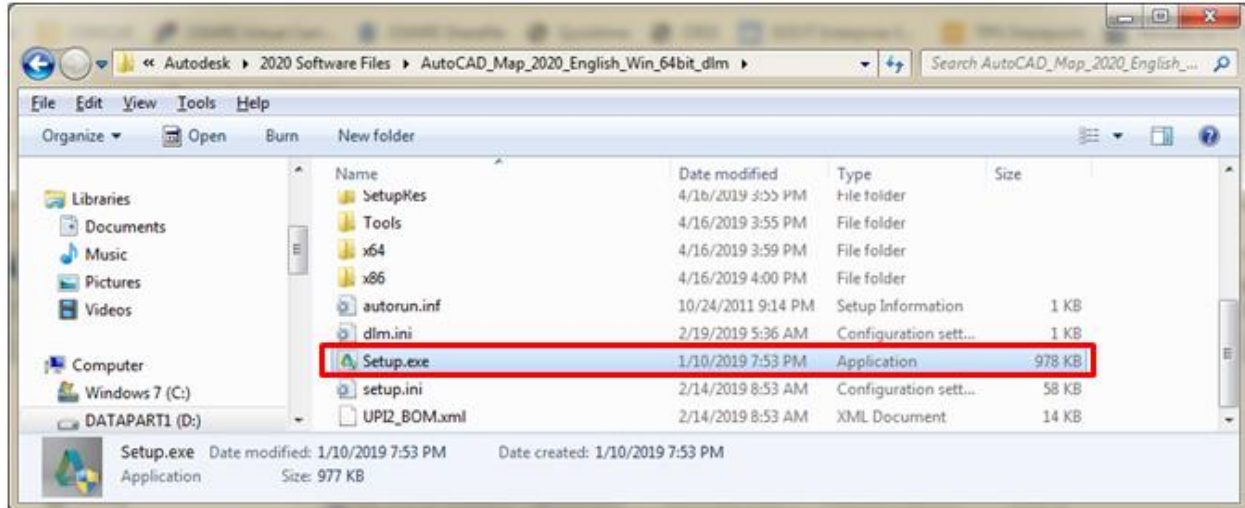
General Overview

- **Direct Installation** - The software can be installed directly on user computers without creation of a deployment image. This will require separate (i.e., repeated) configuration for each installation.

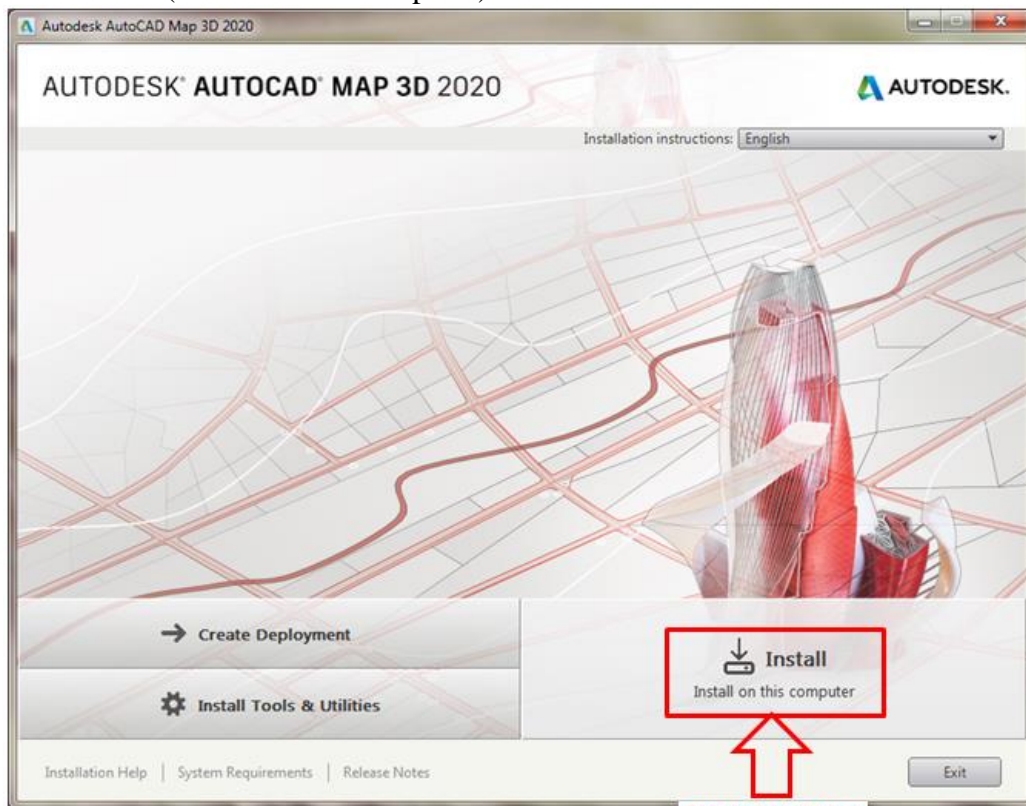
NOTE: If doing a Direct Installation, the program will not ask for the serial number and product key during installation – just ensure that the environment variables are set on the machine as in the distribution letter, then choose Multi-User when first running the program to allow the software to configure itself.
- **All installations must be configured as “Network, Single License Server” license type (See page 5).**
- Microsoft Windows system environment variables must be set on each user computer according to the documentation provided in the TIPS software distribution letter. Note that if TIPS AutoCAD Map 3D software has been previously installed, the variable(s) will already be set. See page 16 for details on accessing the variables.
- Visit <http://www.autodesk.com/support> and search on AutoCAD Map 2020 for current updates and service packs.
- If you have any questions or difficulties, contact Stefanie Self at (412) 937-2105 or SSELF@OSMRE.GOV.
- Additional information (e.g., most recent installation instructions and installation FAQs) is available on the TIPS webpage <https://www.tips.osmre.gov/software/CADSupportTeam.shtm>.

Initialize Installation

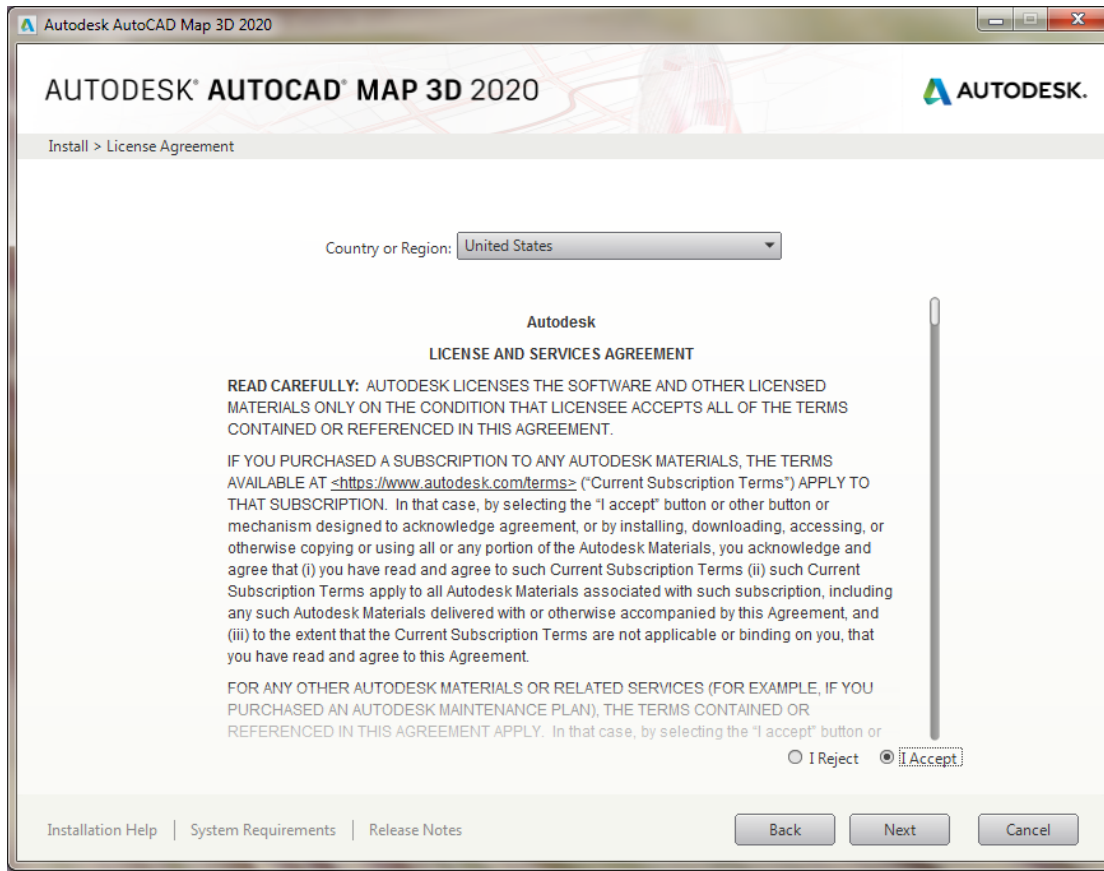
- You must have Administrator credentials to perform the installation (i.e., you must be logged-in as an administrator or, optionally right click on the appropriate shortcut or executable and select the “Run as Administrator” option).
- Navigate to the location of the extracted installation files (i.e., C:\Autodesk\Autodesk_Map_2020_English_Win_64bit_DLM). Double-click on the file “Setup.exe” to initialize the installation routine.



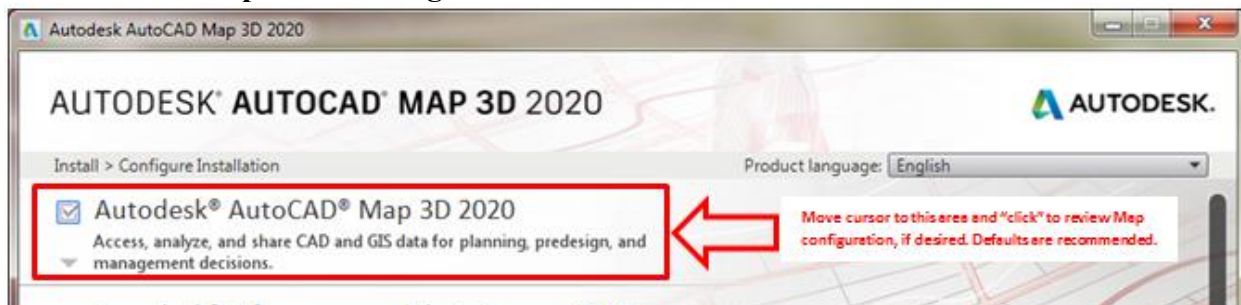
- Click **Install** (Install on this computer).



Single Computer
Installation



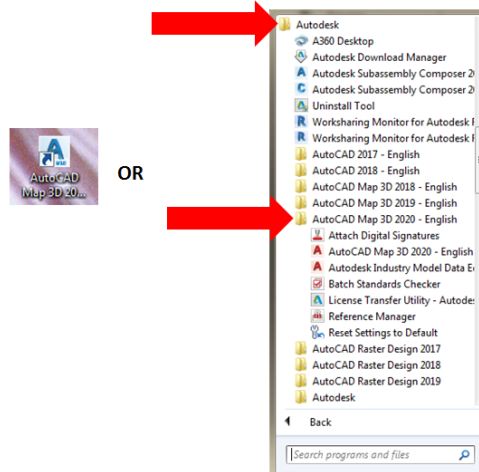
- Note that by default Map 3D, ReCap, Desktop App and A360 Desktop are selected for installation; these defaults are acceptable, but only Map is required.
- Although the Autodesk AutoCAD Map 2020 default configuration settings are recommended / adequate in most cases, you may access / edit specific Map configuration settings by moving your cursor to the area shown in the screenshot below and clicking ‘Click to open and configure’.



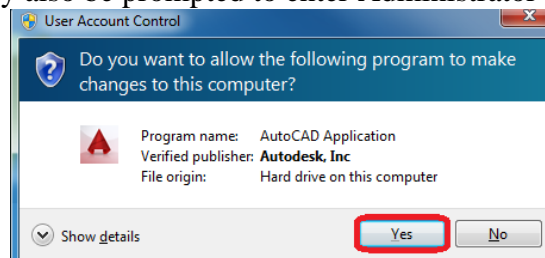
- Likewise, to exit configuration, click ‘Click to close and return to product list’.
- If using the direct install option, click **Install**; after the installation routine is completed (45 – 60 minutes), click **Finish**.

Launch Autodesk AutoCAD Map 2020

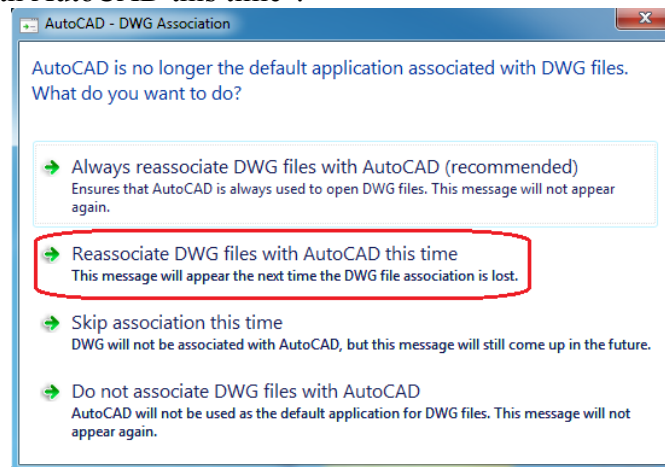
- Have the user login and launch AutoCAD Map 2020.
- The program can be launched from the desktop shortcut or from the Start Menu.



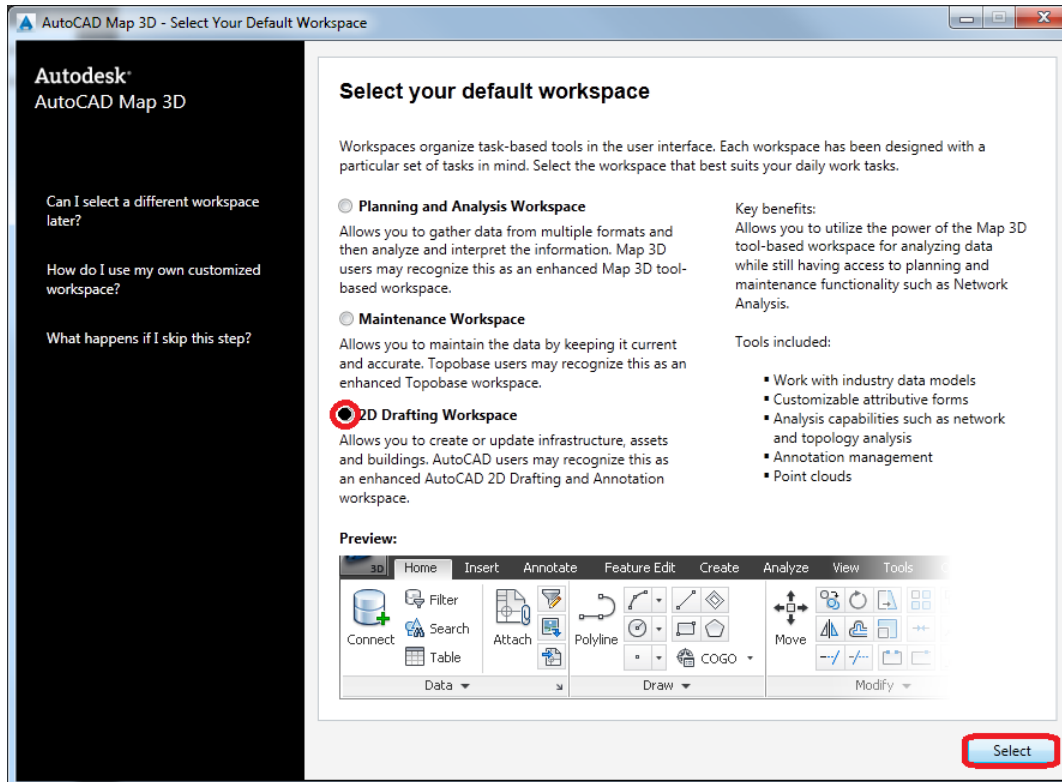
- The program will initiate with first-time start-up configuration...
- If prompted with 'User Control' window, select **Yes** to continue (if not logged-in as Administrator, you may also be prompted to enter Administrator credentials).



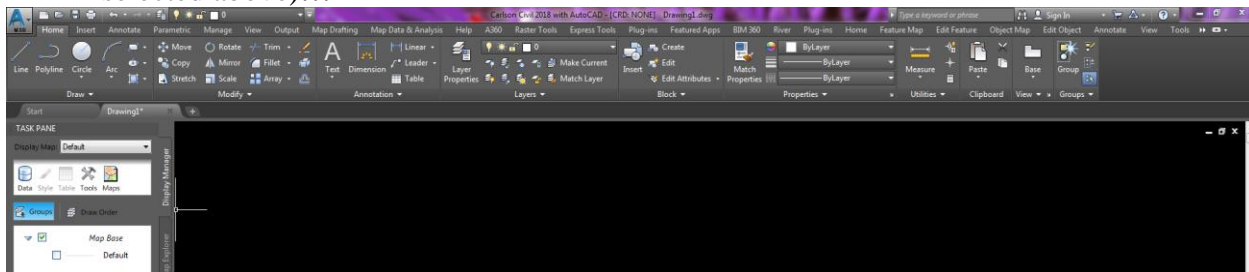
- If prompted with 'DWG Association' window, we recommend selecting "Reassociate DWG files with AutoCAD this time".



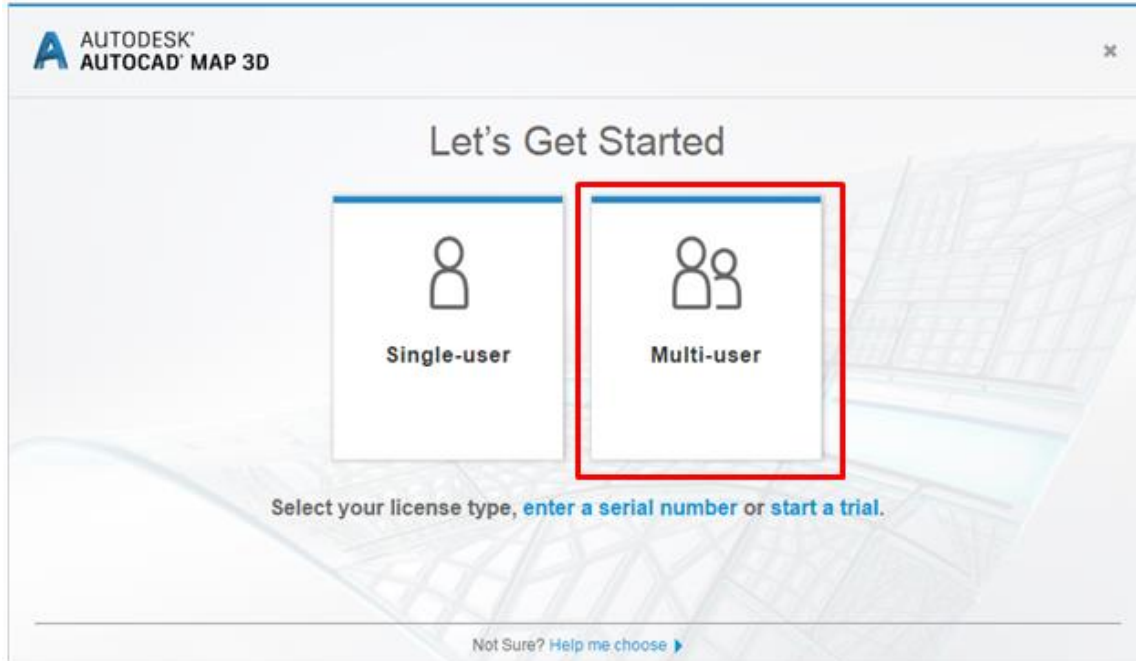
- Likewise, if any other windows appear (e.g., 'Autodesk Customer Involvement Program'), select acceptable response(s) and continue...
- Note the information window on selecting the default workspace.
 - '2D Drafting Workspace' is recommended to start;
- Click **Select** to continue.



- The program will open to the default workspace ('2D Drafting Workspace' or other as selected above)...

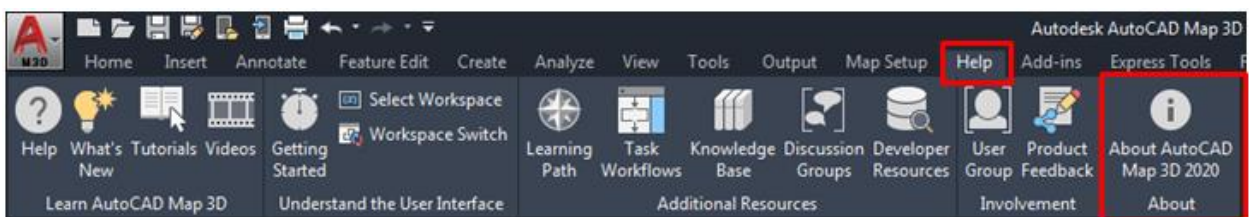
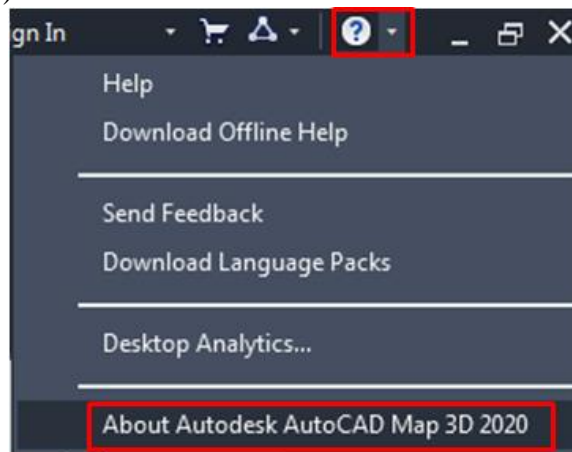


- Once the program has opened, you'll see a dialog for "Let's Get Started", which is where you need to select the type of license you have. **FOR OSMRE LICENSES, WE ONLY SUPPORT MULTI-USER/NETWORK LICENSES. So please choose Multi-User here. The software SHOULD go out and get the license if the environment variables were set as described in the distribution letter.** If you have any issues, please contact Stefanie Self at sself@osmre.gov to troubleshoot.

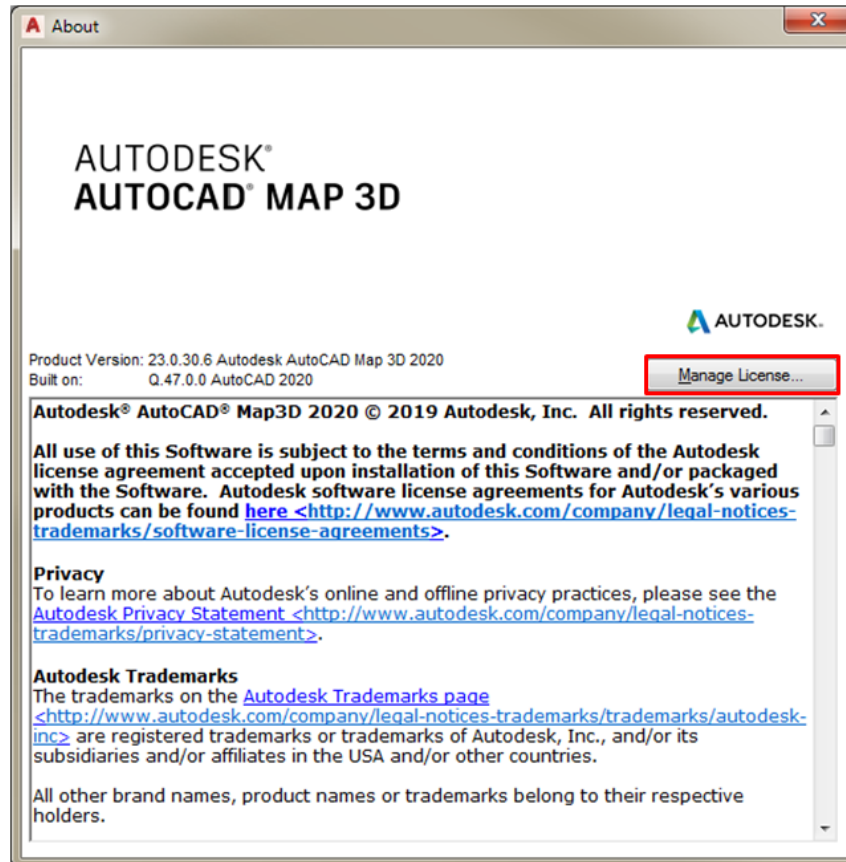


Verify Installation / Network Licensing

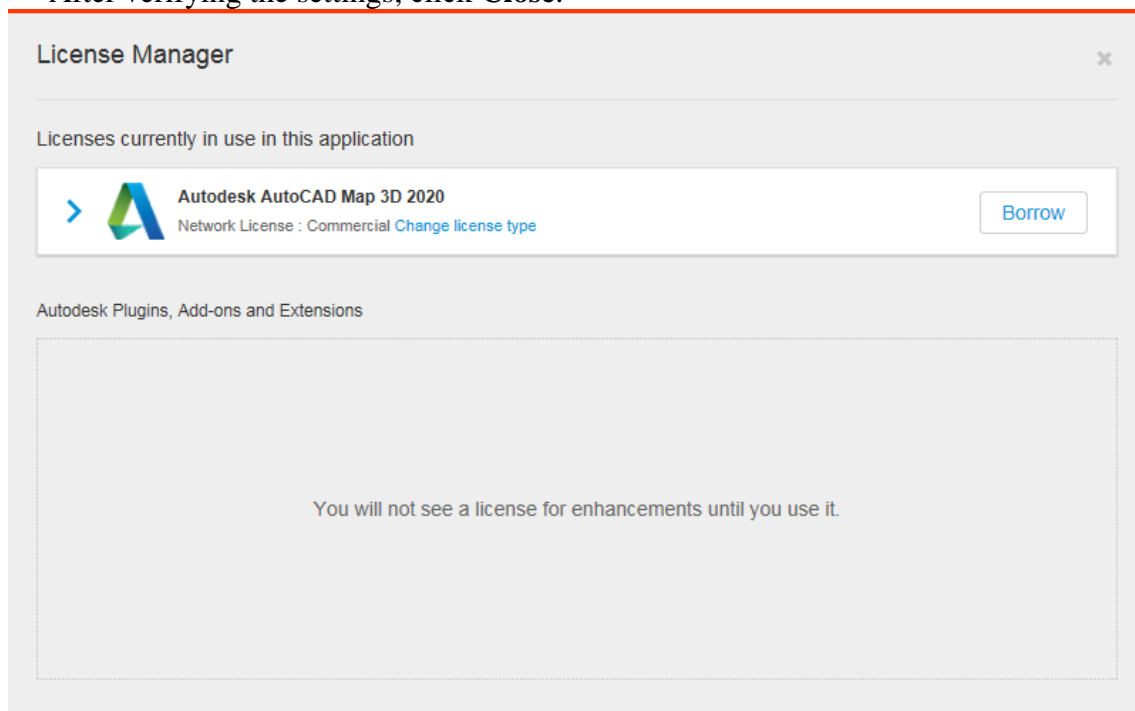
- To verify that the client installation has performed properly, open the 'Help' menu dropdown (from either click on down "arrow" near upper right corner of window or from the Ribbon Help tab) and then click **About Autodesk AutoCAD Map 3D 2020**



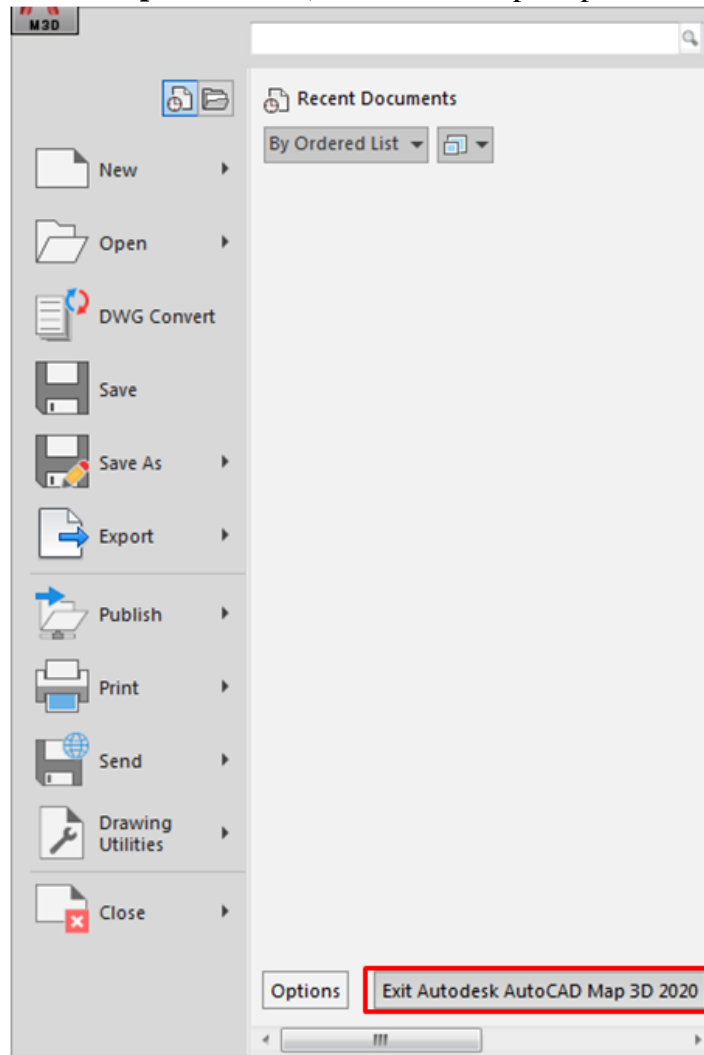
- Click on the **Manage License...** button.



- Verify that the value for 'License name' is 'Autodesk AutoCAD Map 3D 2020' and the value for 'License type' is 'Network'. If the values are anything else, the installation did not perform properly and the licensing is not valid.
- After verifying the settings, click **Close**.



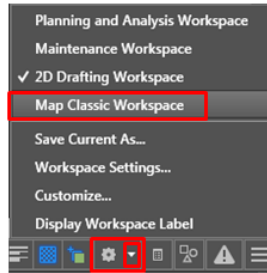
- To Exit the program, click on down “arrow” (at upper left of window) and then click **Exit Autodesk AutoCAD Map 3D 2020**. (Click **No** when prompted to save the drawing file).



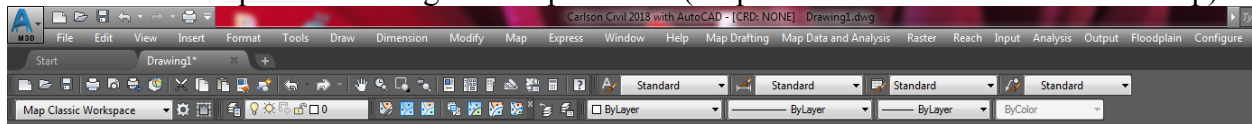
Switching to Map Classic Workspace

Although the classic workspace from earlier versions of AutoCAD Map is not available at program startup and cannot be selected as the default, the user can easily change to it after opening the program; this will have to be repeated every time that the program is run. [Note that none of the AutoCAD Map workspaces will be available if / when the Carlson software is installed].

- Change to the ‘Map Classic Workspace’:
 - Click on the Workspace Switching icon at lower right of the Map program window to access the workspace menu;
 - From the resulting menu, Select / Click ‘Map Classic Workspace’.

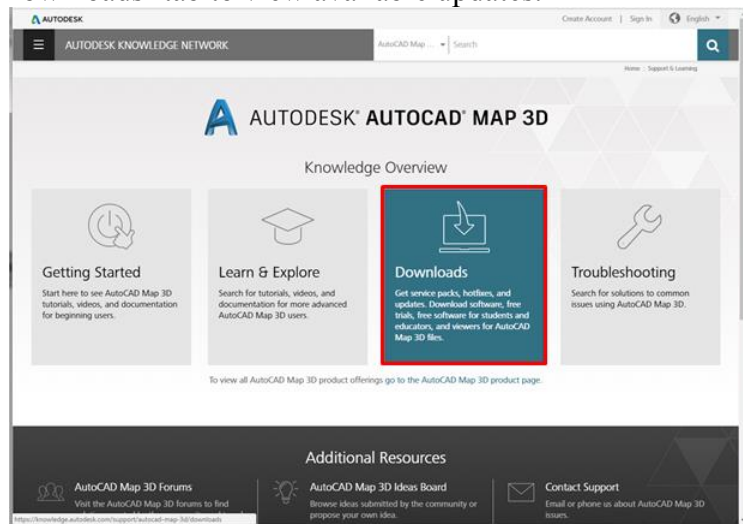


- The workspace will change to 'Map Classic' (dropdown menus and toolbars at the top)...



Program Updates

- Available program updates should be identified by the Autodesk Application Manager which is automatically installed by default with Autodesk AutoCAD Map 2020.
- Alternately, to manually check for the latest Autodesk AutoCAD Map program updates and service packs, go to: <https://knowledge.autodesk.com/support/autocad-map-3d>.
- Select the 'Downloads' tab to view available updates.

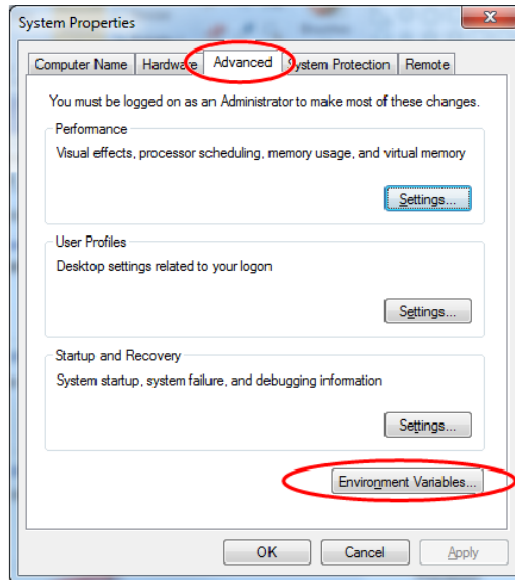


Accessing Microsoft Windows Environment Variables

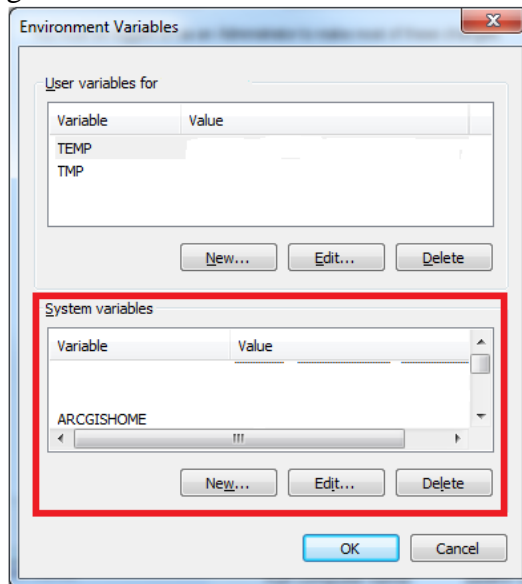
Certain environment variables must be set to allow Autodesk products to obtain a license from the TIPS license server. Specific information on the necessary variables is listed in the software distribution letter mailed to your TIPS contact.

To access the environment variables:

- Navigate to Start Menu → Control Panel → System → Advanced System Settings.
- On the 'System Properties' window, select the 'Advanced' tab and click **Environment Variables**.



The lower half of the resulting Environment Variables dialog box is the area where you can add new variables or edit existing ones.



Installation / Update Contacts

If you have any installation or update questions or difficulties, contact Stefanie Self at (412) 937-2105 or SSELF@OSMRE.GOV.

Additional information (e.g., most recent installation instructions and installation FAQs) is available on the TIPS CAD Software webpage

<https://www.tips.osmre.gov/software/CADSupportTeam.shtm>.