

## TIPS Autodesk AutoCAD Raster Design 2019 Installation Instructions

### INSTALLING ON INDIVIDUAL COMPUTERS

#### Getting Started

- All TIPS users must install the latest K2Client (KeyClient) on their machine prior to installing new software versions. This is a requirement of the TIPS program to allow for adequate collection of license and server usage statistics. The latest KeyClient is available on the TIPS website <https://www.tips.osmre.gov/software/downloads.shtm>.
- Before starting the AutoCAD Raster Design installation process, you will need the following:
  - 2019 AutoCAD Raster Design Software files. These can be downloaded via the Autodesk Virtual Agent website at <https://ava.autodesk.com/> - use the interactive “AVA” to find the files for download. If you are unable to download the installation file, please contact your TIPS Service Manager and they will provide you with a USB drive.
  - Serial number, product key, and environment variable information provided with the TIPS CAD software distribution (obtained from your TIPS Service Manager).
  - The recommended program installation requires approximately 3 GB of disk space on each user computer (using default program installation settings).
  - **Administrator credentials are required for product installation.**
  - **For AutoCAD Raster Design, you MUST install a base-AutoCAD product and initialize it prior to installation of Raster Design. OSMRE provides the AutoCAD Map 3D program as a base AutoCAD program.**
  - TIPS recommends that all antivirus services be disabled during installation.

#### General Overview

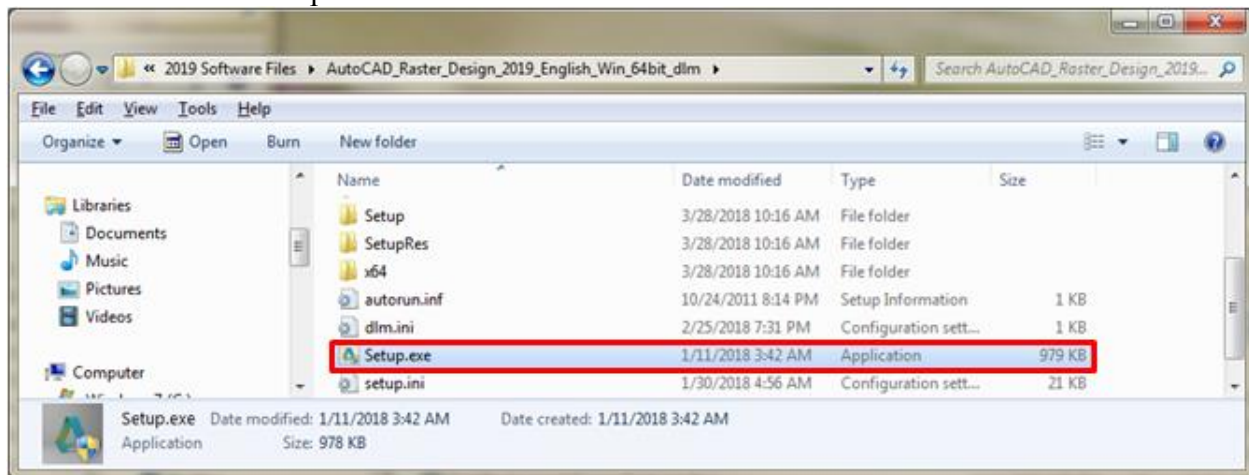
- **Direct Installation** - The software can be installed directly on user computers without creation of a deployment image. This will require separate (i.e., repeated) configuration for each installation.

NOTE: If doing a Direct Installation, the program will not ask for the serial number and product key during installation – just ensure that the environment variables are set on the machine as in the distribution letter, then choose Multi-User when first running the program to allow the software to configure itself.
- **All installations must be configured as “Network, Single License Server” license type.**
- Microsoft Windows system environment variables must be set on each user computer according to the documentation provided in the TIPS software distribution letter. Note that if TIPS AutoCAD Raster Design software has been previously installed, the variable(s) will already be set. See page 5 for details on accessing the variables.
- Visit <http://www.autodesk.com/support> and search on AutoCAD Raster Design 2019 for current updates and service packs.
- If you have any questions or difficulties, contact Stefanie Self at (412) 937-2105 or [SSELF@OSMRE.GOV](mailto:SSELF@OSMRE.GOV).

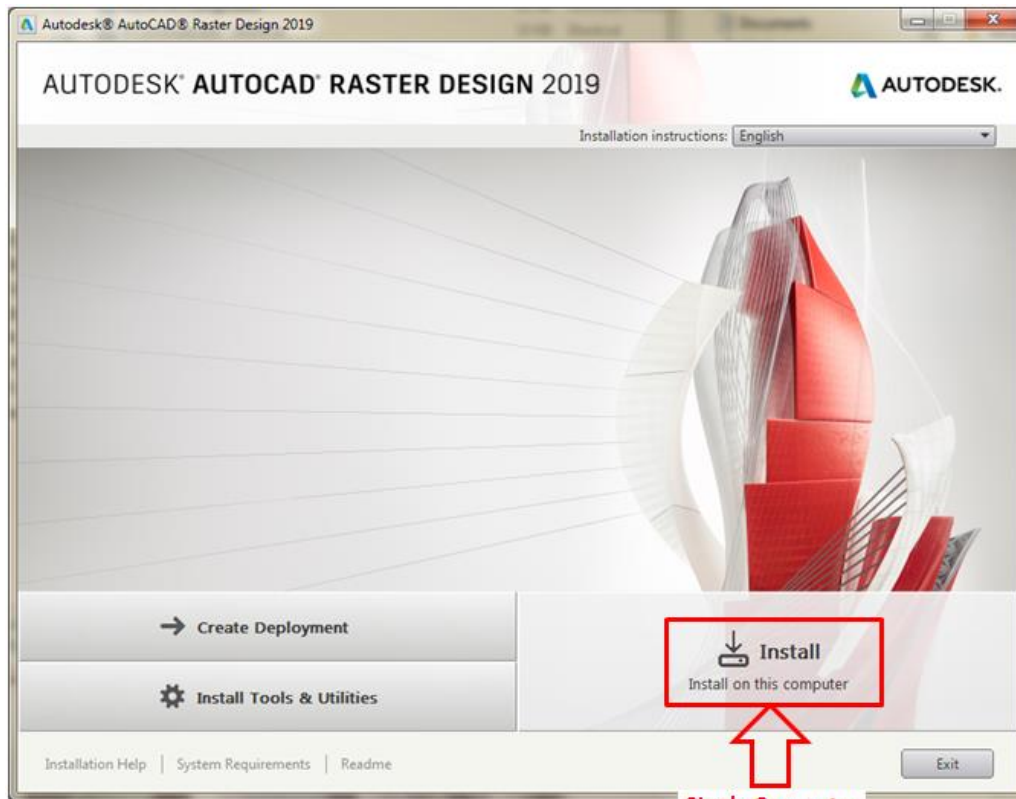
- Additional information (e.g., most recent installation instructions and installation FAQs) is available on the TIPS webpage  
<https://www.tips.osmre.gov/software/CADSupportTeam.shtm>.

### **Initialize Installation**

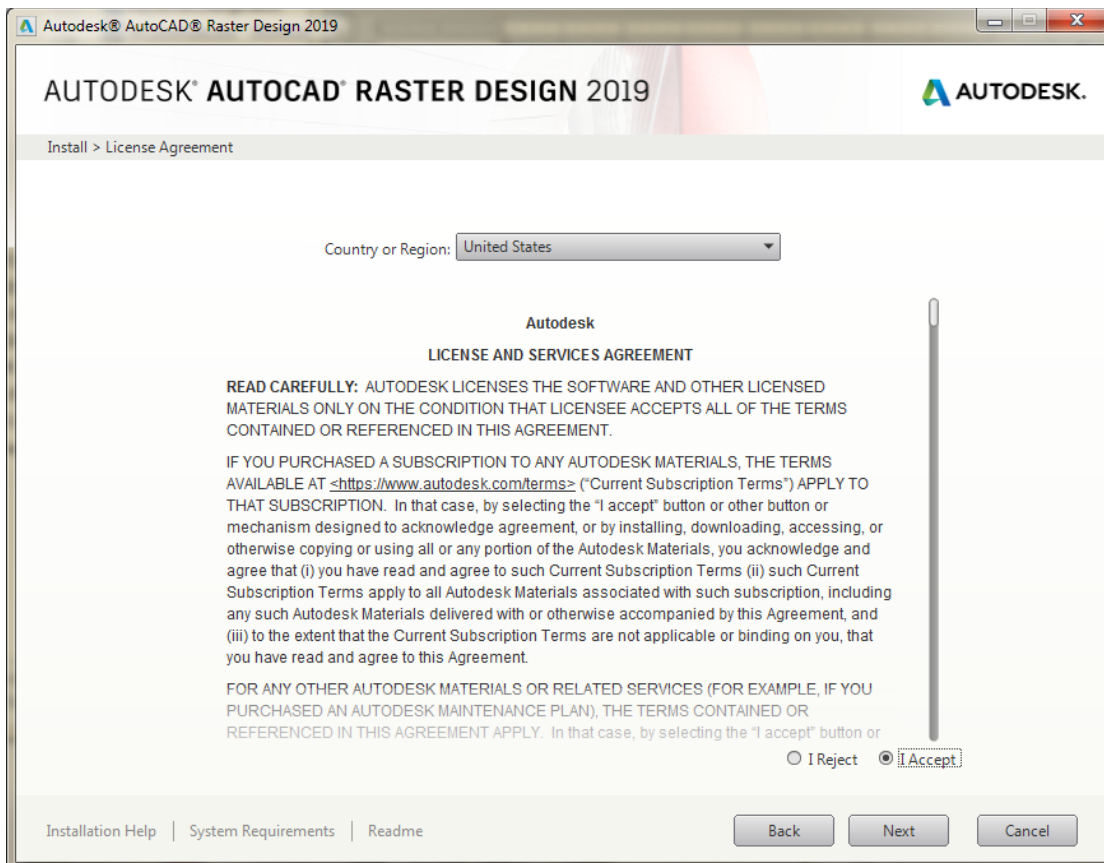
- **You must have Administrator credentials to perform the installation (i.e., you must be logged-in as an administrator or, optionally right click on the appropriate shortcut or executable and select the “Run as Administrator” option).**
- Navigate to the location of the extracted installation files (i.e., C:\Autodesk\AutoCAD\_Raster\_Design\_2019\_English\_Win\_64bit\_DLM). Double-click on the file “Setup.exe” to initialize the installation routine.



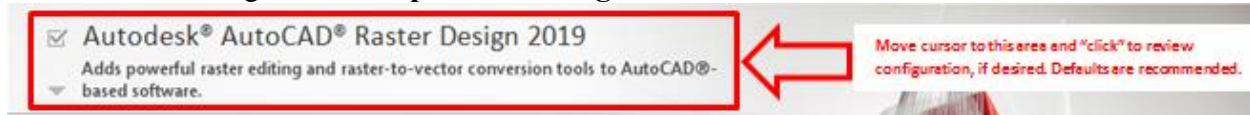
- Click **Install** (Install on this computer).



Single Computer Installation



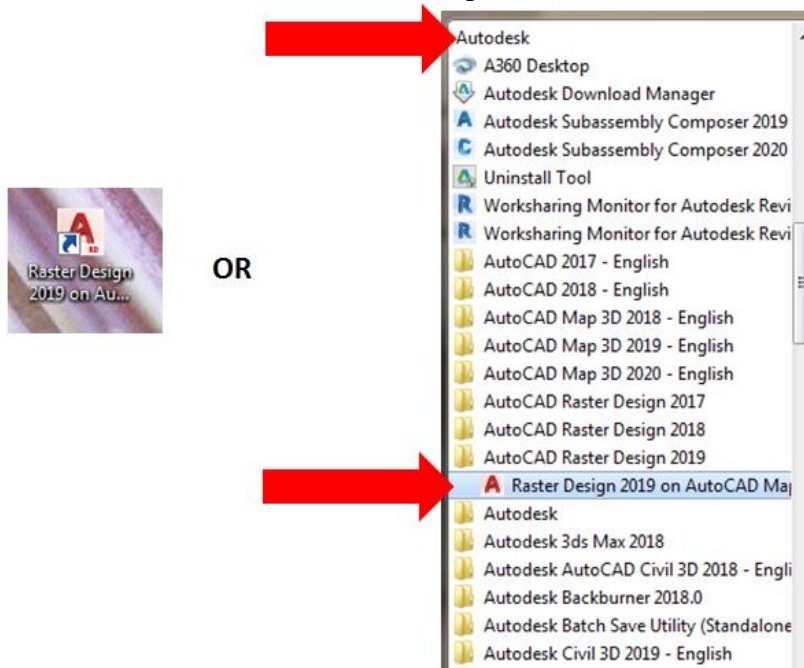
- Although the Autodesk AutoCAD Raster Design 2019 default configuration settings are recommended / adequate in most cases, you may access / edit specific Raster Design configuration settings by moving your cursor to the area shown in the screenshot below and clicking ‘Click to open and configure’.



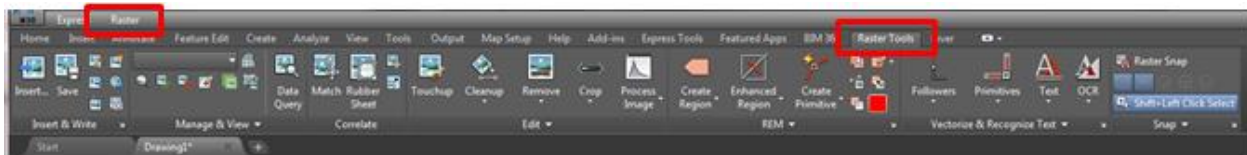
- Likewise, to exit configuration, click ‘Click to close and return to product list’.
- If using the direct install option, click **Install**; after the installation routine is completed (45 – 60 minutes), click **Finish**.

### Launch Autodesk AutoCAD Raster Design 2019

- Have the user login and launch AutoCAD Raster Design 2019.
- The program can be launched from the desktop shortcut or from the Start Menu.



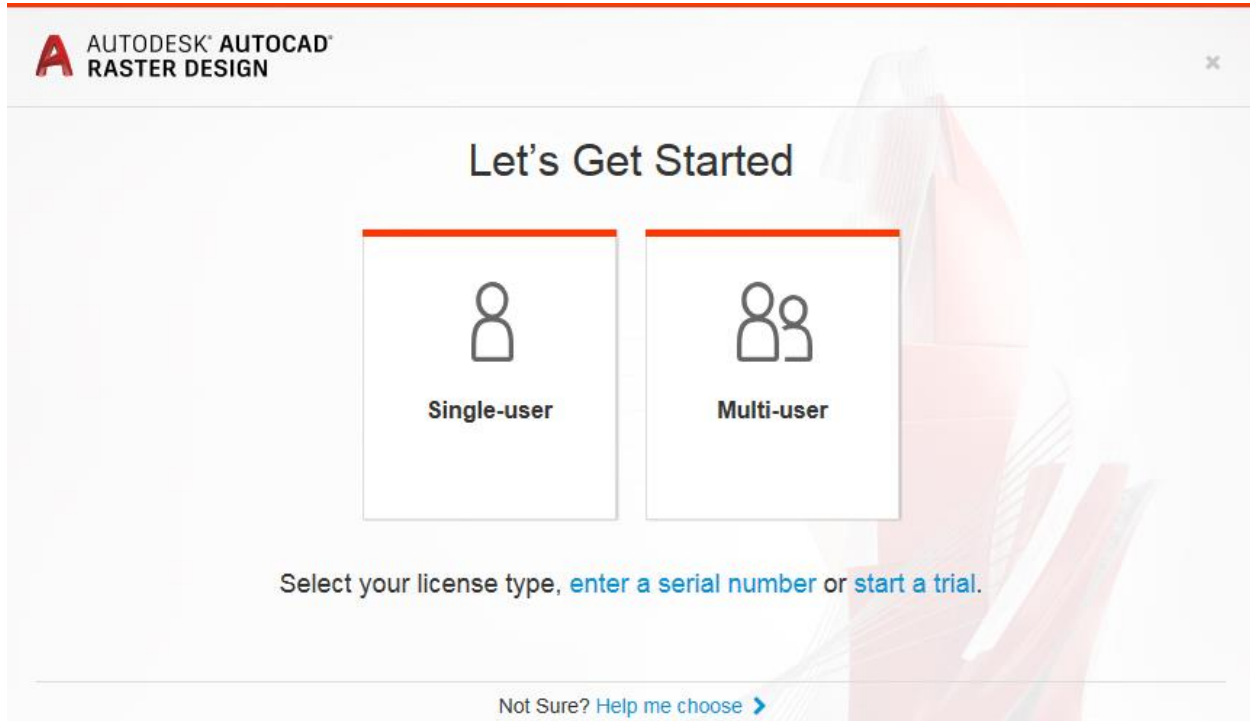
- When first starting the program using the Raster Design shortcut, your Map 3D product should initialize, with the settings you chose during the first run of the program.
- Look to see if a Raster tab has been added to the ribbon, or a Raster pull-down menu, such as shown:



- If the Raster Design tools have not loaded, please follow the instructions here:

<https://knowledge.autodesk.com/support/autocad/troubleshooting/caas/sfdcarticles/sfdcarticles/AutoCAD-Raster-Design-tools-are-not-displayed-on-the-ribbon.html>

- When you go to the Raster tab on the menu, the Raster Design splash screen should appear to obtain a Raster Design license. At this point, **you may see a dialog for “Let’s Get Started”, which is where you need to select the type of license you have. FOR OSMRE LICENSES, WE ONLY SUPPORT MULTI-USER/NETWORK LICENSES. So please choose Multi-User here. The software SHOULD go out and get the license if the environment variables were set as described in the distribution letter.** If you have any issues, please contact Stefanie Self at [sself@osmre.gov](mailto:sself@osmre.gov) to troubleshoot.



### **Program Updates**

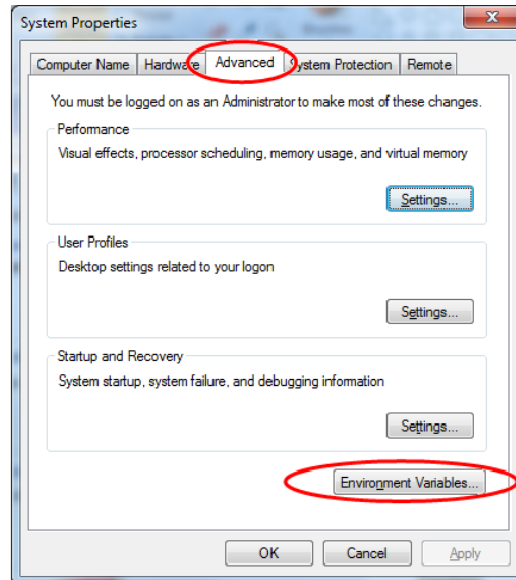
- Available program updates should be identified by the Autodesk Application Manager which is automatically installed by default with Autodesk products.
- Alternately, to manually check for the latest Autodesk AutoCAD Raster Design program updates and service packs, go to: <https://knowledge.autodesk.com/support/autocad-raster-design>.
- Select the ‘Downloads’ on the left to view available updates.

### **Accessing Microsoft Windows Environment Variables**

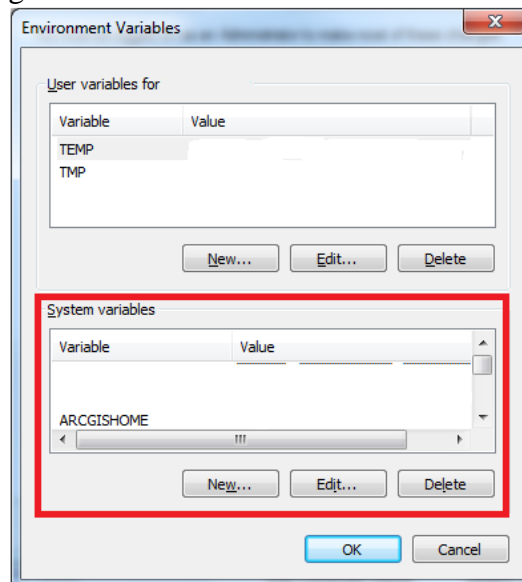
Certain environment variables must be set to allow Autodesk products to obtain a license from the TIPS license server. Specific information on the necessary variables is listed in the software distribution letter mailed to your TIPS contact.

To access the environment variables:

- Navigate to Start Menu → Control Panel → System → Advanced System Settings.
- On the 'System Properties' window, select the 'Advanced' tab and click **Environment Variables**.



The lower half of the resulting Environment Variables dialog box is the area where you can add new variables or edit existing ones.



### ***Installation / Update Contacts***

If you have any installation or update questions or difficulties, contact Stefanie Self at (412) 937-2105 or SSELF@OSMRE.GOV.

Additional information (e.g., most recent installation instructions and installation FAQs) is available on the TIPS CAD Software webpage

<https://www.tips.osmre.gov/software/CADSupportTeam.shtm>.