

## TIPS Autodesk AutoCAD Raster Design 2017 Installation Instructions

### Getting Started

- All TIPS users must install the latest K2Client (KeyClient) on their machine prior to installing new software versions. This is a requirement of the TIPS program to allow for adequate collection of license and server usage statistics. The latest KeyClient is available on the TIPS website <https://www.tips.osmre.gov/software/downloads.shtm>.
- Autodesk AutoCAD Raster Design runs on existing AutoCAD or AutoCAD Map 3D installations – you MUST install and run one of those programs before installing Raster Design.
- Before starting the AutoCAD Map installation process, you will need the following:
  - TIPS 2017 CAD Software USB drive (or DVD, if applicable) or download / order “free trial” from the Autodesk website at <http://www.autodesk.com/rasterdesign/>.
  - Serial number, product key, and environment variable information provided with the TIPS CAD software distribution (obtained from your TIPS Service Manager).
  - A network shared folder with full access privileges (if creating a network deployment image). This is the location where the deployment image will be created. The base image will occupy about 6.2 GB of disk space; ~3 GB additional for updates.
  - The recommended program installation requires approximately 3 GB of disk space on each user computer (using default program installation settings).
  - **Administrator credentials are required for product installation.**
  - TIPS recommends that all antivirus services be disabled during installation.

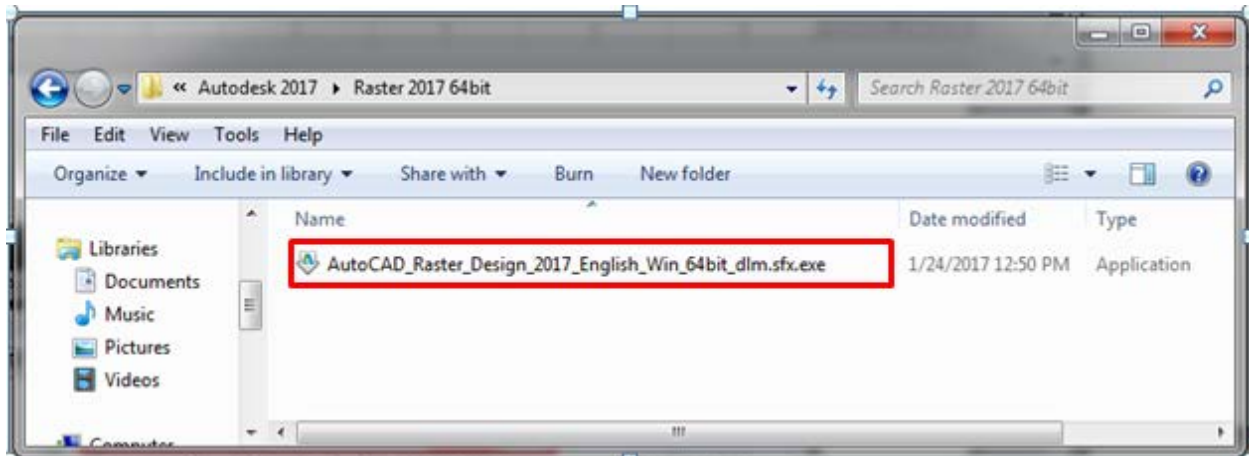
### General Overview

- Deployment Image (Recommended) - Although AutoCAD Raster Design can be installed directly on each user computer, we recommend that a network deployment image be created and used for consistent installation. Once created, the deployment image is used for installation on individual user computers without having to configure each installation separately; all files necessary to run the program on each user computer are copied, and no communication with the image is required thereafter.
- Direct Install (Optional) - As an option, the software can be installed directly on user computers without creation of a deployment image. This will require separate (i.e., repeated) configuration for each installation. The installation procedure is the same as that shown below under ‘Create a Network Deployment Image,’ minus references to deployment image name, directory location, and general deployment settings.
- **All installations must be configured as “Network, Single License Server” license type (See page 5).**
- Microsoft Windows system environment variables must be set on each user computer according to the documentation provided in the TIPS software distribution letter. Note that if TIPS AutoCAD Raster Design software has been previously installed, the variable(s) will already be set. See page 16 for details on accessing the variables.
- Visit <http://www.autodesk.com/support> and search on AutoCAD Raster Design 2017 for current updates and service packs.

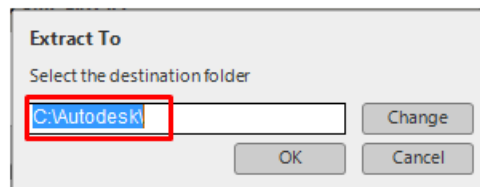
- If you have any questions or difficulties, contact Stefanie Self at (412) 937-2105 or SSELF@OSMRE.GOV.
- Additional information (e.g., most recent installation instructions and installation FAQs) is available on the TIPS webpage <https://www.tips.osmre.gov/software/CADSupportTeam.shtm>.

### Extract Installation Files

- The 2017 Autodesk software is contained in self-extracting SFX files on the TIPS 2017 CAD Software USB or DVD drive; the files must be extracted to a computer hard drive in order to initiate the installation process.
- Insert the TIPS 2017 CAD software drive and browse to the Raster 2017 64bit folder. Double-click on the SFX file...



- The installation routine has a directory path limit of 105 characters; you will receive a warning if that length is exceeded. Therefore, we recommend using the default folder (i.e., C:\Autodesk) to avoid exceeding the limit. Click **OK** to initiate the file extraction routine.

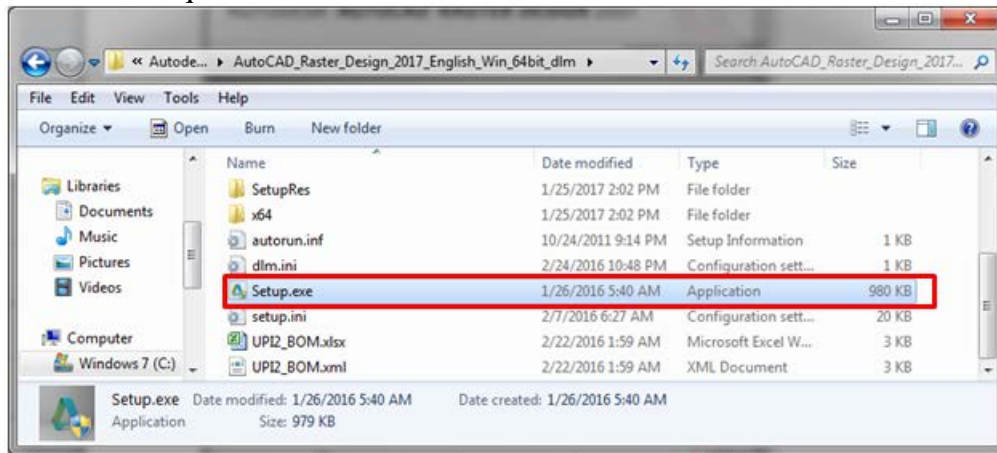


- The installation files will be extracted automatically to a subdirectory named "AutoCAD\_Raster\_Design\_2017\_English\_Win\_64bit\_DLM."
- When file extraction is completed, the installation routine will automatically initiate. If you do not wish to continue with installation, click "No" or "Exit" at the appropriate window. Otherwise, continue with "Recommended Installation" or "Optional Installation," on the page 3, below.

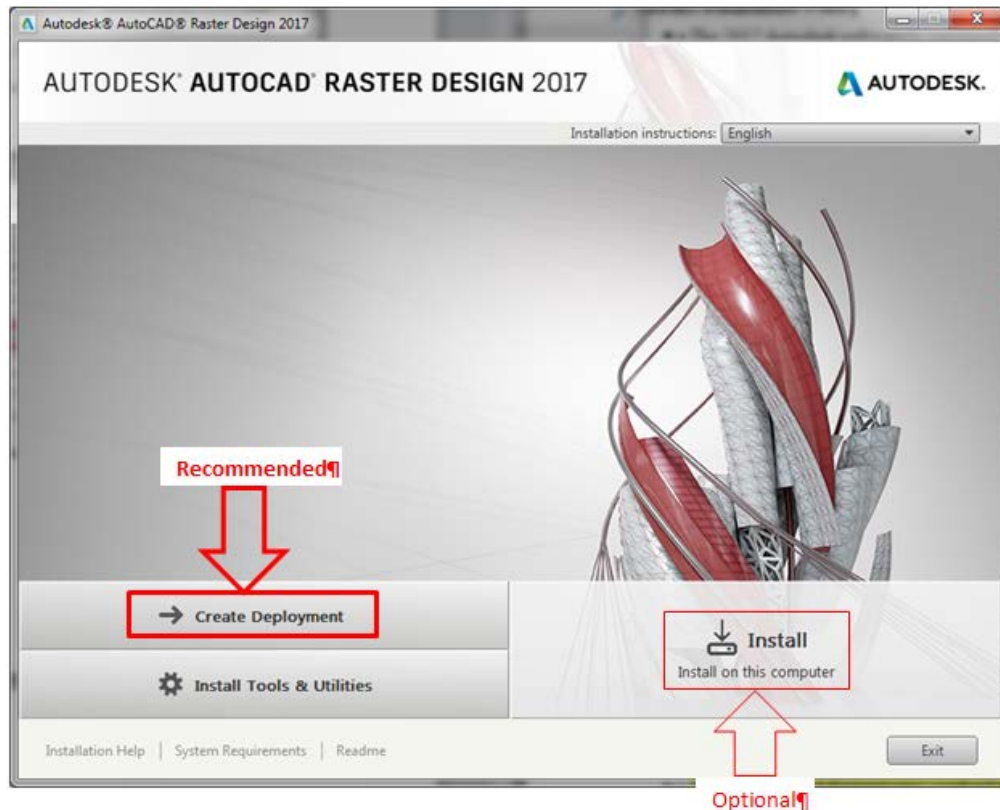
### Initialize Installation

- **You must have Administrator credentials to perform the installation (i.e., you must be logged-in as an administrator or, optionally right click on the appropriate shortcut or executable and select the "Run as Administrator" option).**

- Navigate to the location of the extracted installation files (i.e., C:\Autodesk\AutoCAD\_Raster\_Design\_2017\_English\_Win\_64bit\_DLM). Double-click on the file “Setup.exe” to initialize the installation routine. Enter appropriate “Administrator” credentials if requested to do so.

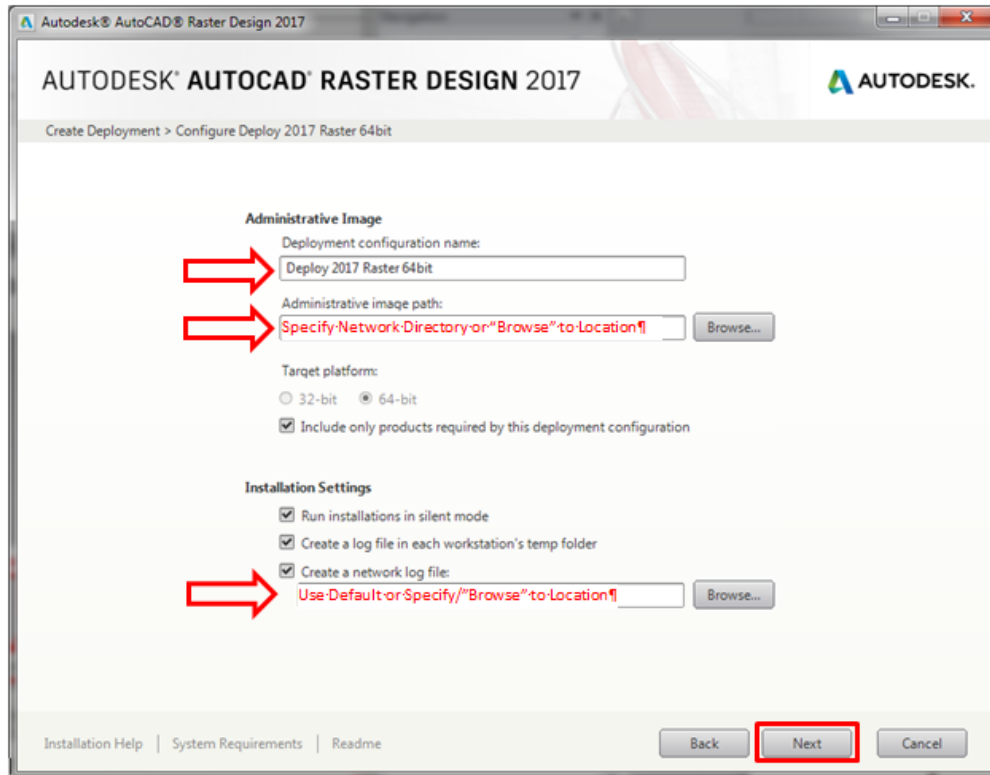


- **Recommended Installation:** Click **Create Deployment**. This will initiate creation of a deployment image on a network drive. The deployment image can then be used to install the software on any number of user machines with access to the network drive over the life of the software version. Continue with **Create a Network Deployment Image** on page 4, below.
- **Optional Installation:** Click **Install** (Install on this computer). This will initiate direct installation of the software on the current user computer; configuration will have to be repeated for each installation. Please take special note of all underlined instructions for Individual Machine Installations.

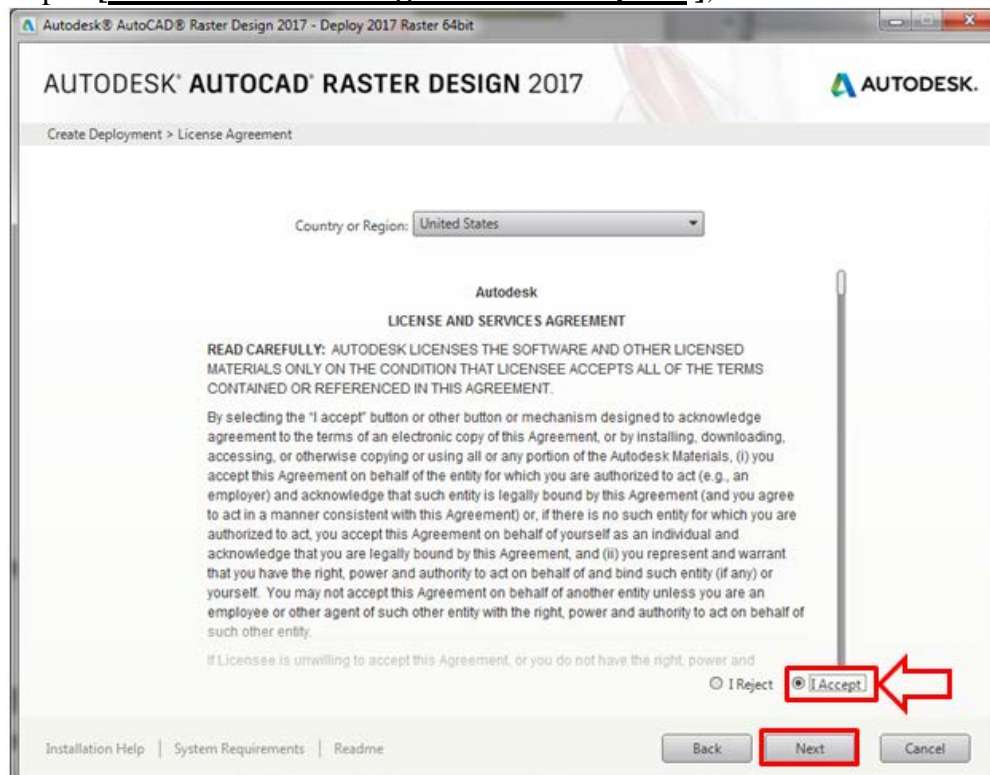


### **Create a Network Deployment Image**

- Specify the deployment configuration name (e.g., Deploy 2017 Raster Design 64bit). This “names” the associated program shortcut for the deployment.
- Specify (or “Browse” to select) a Network Directory location where the deployment image is to be created and later accessed for installation on user computers; we suggest the network subdirectory be \Deploy2017Map64bit. The base image requires approximately 6.2 GB of disk space; ~3 GB more will be required if available Service Packs are applied to the base image. Note: This window is not applicable if using the direct install option.
- Note the default “Installation Settings”; these are recommended. If a network log file is to be created, the network directory will default to the network location where the deployment image is to be created (specified above); this can be changed if desired.
- Click **Next** to continue.

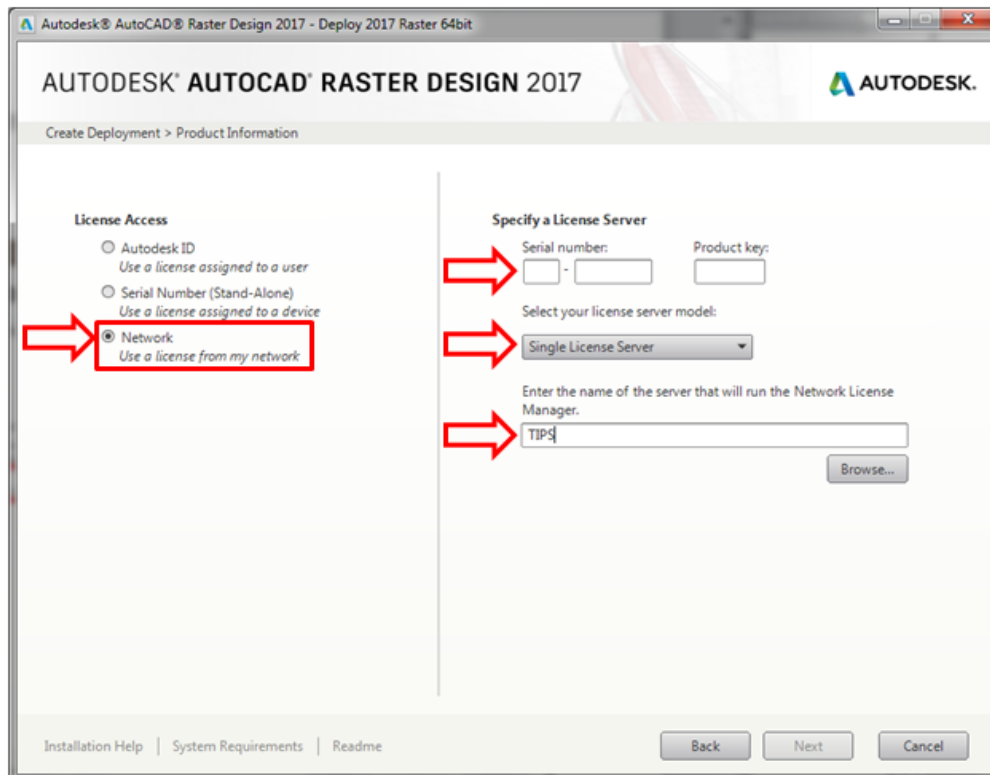


- Review the license agreement and, if agreeable, select (i.e., click in the circle next to) “I Accept”. [**Continue here if using direct install option.**]; click **Next** to continue.

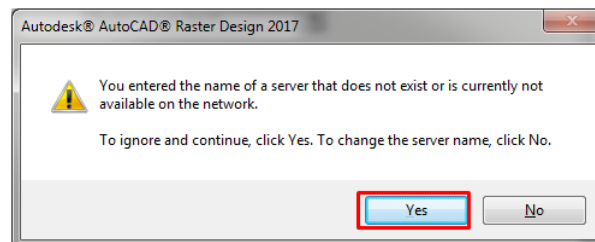


**\*\*\*\*\* CRITICAL STEP \*\*\*\*\***

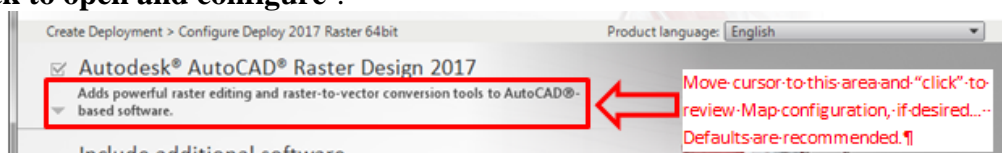
- Click the circle next to 'Network'.
  - Verify that the license server model is '**Single License Server**' [This should be the default when 'Network' was selected (above step)].
  - Enter '**TIPS**' as the name of the license server.
  - Enter the **Serial number** and **Product key**; these were provided in the letter that accompanied the software distribution (**this information must be secured.**).
- Click **Next** to continue.



- You will get a warning that the server does not exist; click **Yes** to ignore the warning and continue.



- Although the Autodesk AutoCAD Raster Design 2017 default configuration settings are recommended / adequate in most cases, you may access / edit specific Map configuration settings by moving your cursor to the area shown in the screenshot below and clicking '**Click to open and configure**'.

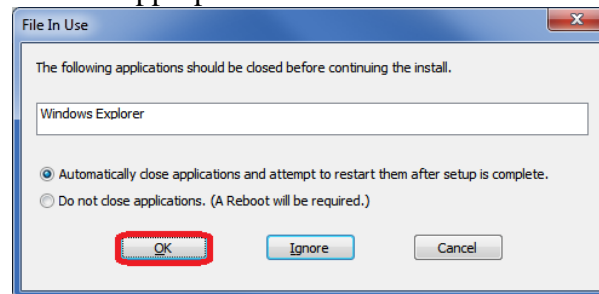




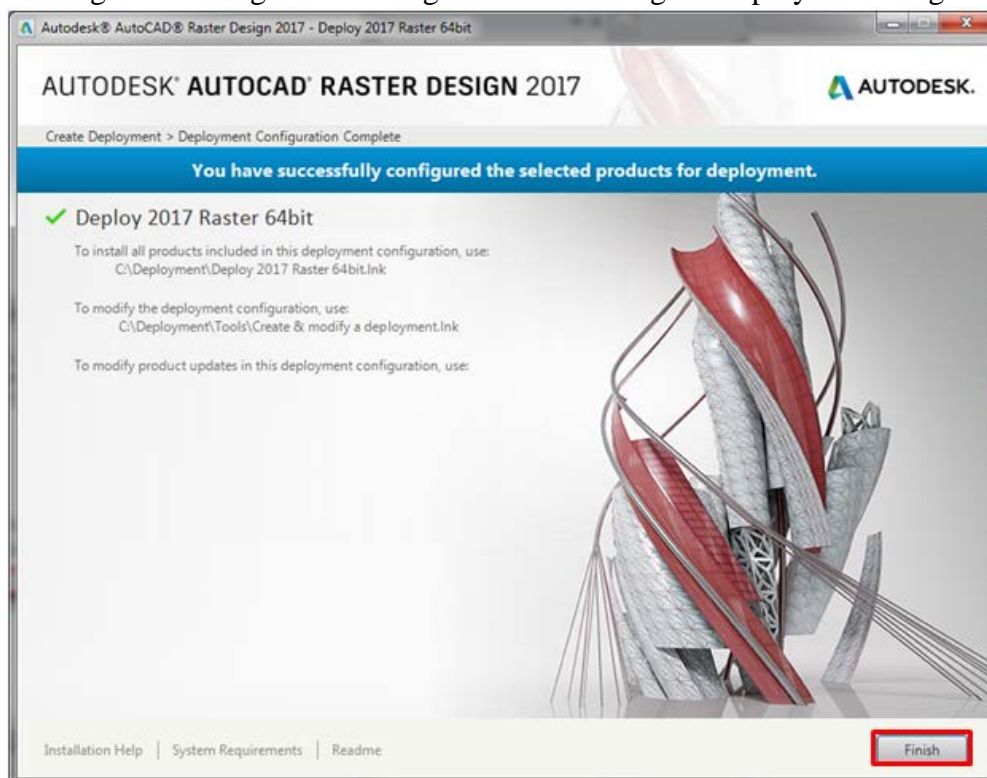
- Likewise, to exit configuration, move cursor to the area shown in screenshot below and click **‘Click to close and return to product list’**.



- Click **Create** to initiate creation of the deployment image.
- If using the direct install option, click **Install**; after the installation routine is completed (45 – 60 minutes), click **Finish** and continue on to ‘Launch Autodesk AutoCAD Raster Design 2017’ on page 9.
- The process will rotate through various screen images as necessary files are copied to the deployment. Depending on computer / network connection speed, the process may take one hour or more.
- If the process is interrupted with a ‘File In Use’ or any other window, accept default setting and click **OK** or other appropriate button to continue.



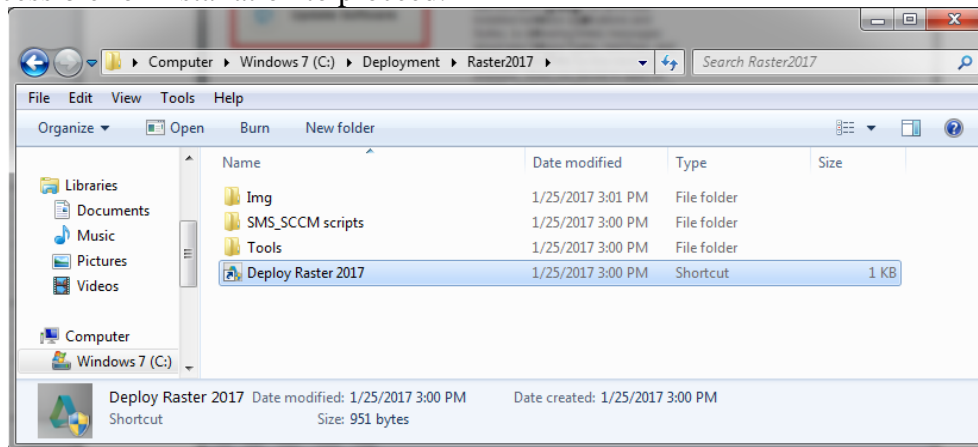
- When the base process has completed, note the paths shown for various shortcuts pertaining to installing Raster Design and / or altering the deployment image.



- Click appropriate button(s) to continue if security alerts appear.
- The process will end after all selecting Finish at the bottom of the screen. No “Finish” screen will appear. This will complete the deployment image creation.

### ***Install Autodesk AutoCAD Raster Design 2017 on Client Computers***

- ***You must have Administrator credentials to perform the installation (i.e., You must be logged in as an administrator on the client computer and right click on the shortcut/executable and select the “Run as Administrator” option).***
- From the client computer, navigate to the directory that contains the Network Deployment Image (i.e., the network directory that was specified during creation of the deployment image; see page 4.).
- Right click on the deployment shortcut in this directory and select “Run as Administrator”. The shortcut will have whatever name you specified during creation of the deployment image (see page 4).
- Optionally, the shortcut can be copied to an alternate, more convenient location and accessed there; note that the deployment image location must not be changed and must be accessible for installation to proceed.

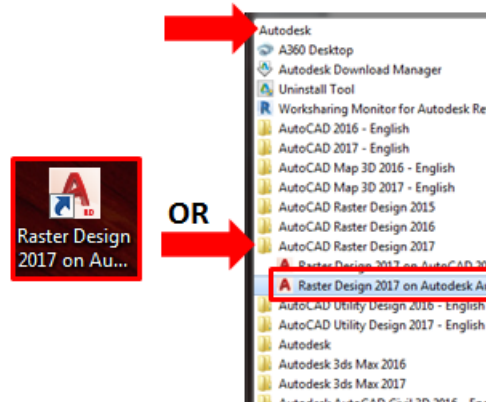


- Installation will begin (If a security alert window appears, select **Yes** to continue.); installation may take up to one hour or more depending on network connection and client computer speed.
- The status window will simply close (i.e., disappear) when installation is complete. There will not be a “notice” that the installation was successful.
- Note: The system environment variable specified in the TIPS software distribution letter must be set in order for the software to obtain a network license (If TIPS Autodesk software has been previously installed, the variable will already be set; see page 16 for details on accessing the variables.}.

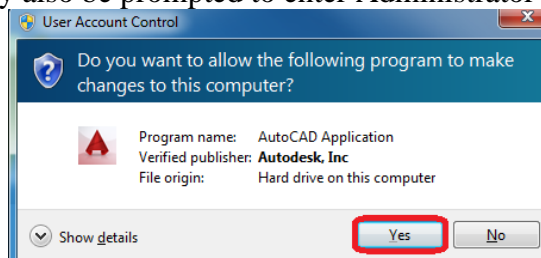
### ***Launch Autodesk AutoCAD Raster Design 2017***

- Have the user login and launch AutoCAD Raster Design 2017.
- The program can be launched from the desktop shortcut or from the Start Menu.

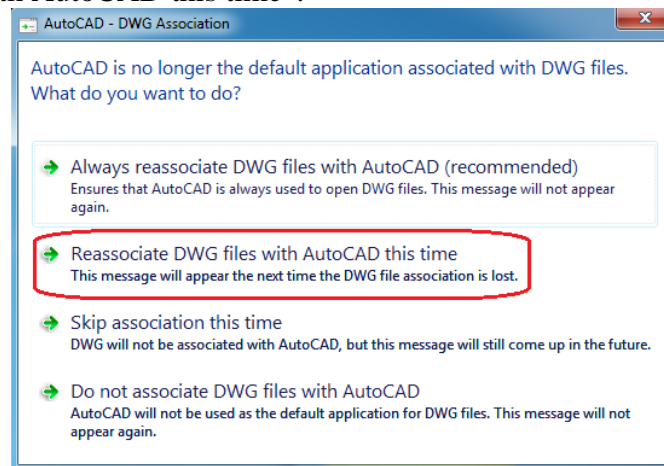




- The program will initiate with first-time start-up configuration...
- If prompted with 'User Control' window, select **Yes** to continue (if not logged-in as Administrator, you may also be prompted to enter Administrator credentials).



- If prompted with 'DWG Association' window, we recommend selecting "Reassociate DWG files with AutoCAD this time".

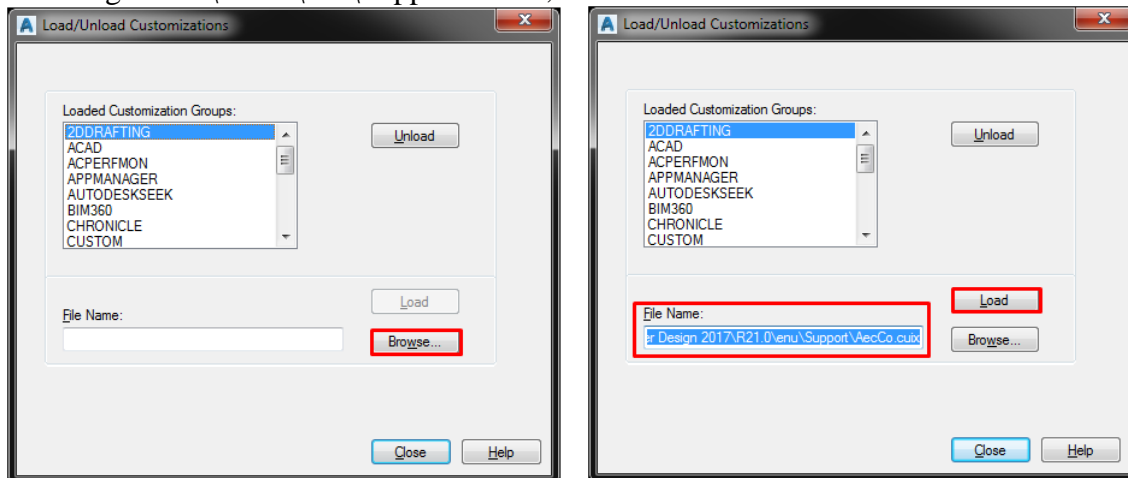


- Likewise, if any other windows appear (e.g., 'Autodesk Customer Involvement Program'), select acceptable response(s) and continue...
- The program will open to the default workspace selected when Map 3D was installed.
- Note: A splash screen will appear showing that both Map 3D and Raster Design are initialized.

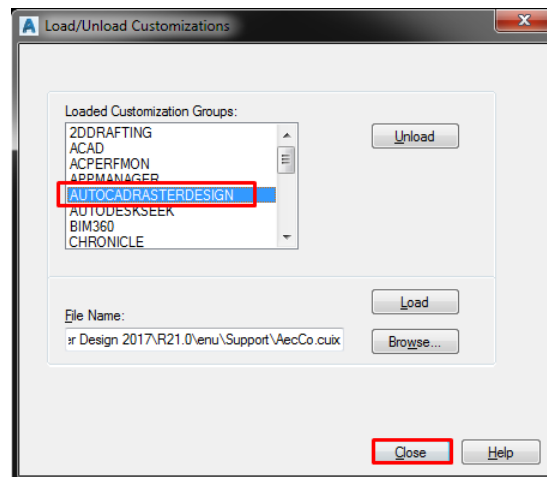
### **Load Raster Design Tools**

- Often, the Raster ribbon tab and/or pull-down menu often doesn't appear by default – installer or user will need to load.

- To load, type in CUILOAD in the command line. Use the Browse... button and navigate to the C:\Users\ADMIN USER NAME\AppData\Roaming\Autodesk\AutoCAD Raster Design 2017\R21.0\enu\Support folder, and choose the AECCO.CUIX file.



- Once the file name appears in the box, hit the Load button. Note that AUTOCADRASTERDESIGN will appear in the Loaded Customization Groups section. Then hit Close.



- Note that the Raster Tools tab of the ribbon now appears. Instructions can also be found here: <https://knowledge.autodesk.com/support/autocad-raster-design/troubleshooting/caas/sfdcarticles/sfdcarticles/AutoCAD-Raster-Design-tools-are-not-displayed-on-the-ribbon.html>

### **Installation / Update Contacts**

If you have any installation or update questions or difficulties, contact Stefanie Self at (412) 937-2105 or SSELF@OSMRE.GOV.

Additional information (e.g., most recent installation instructions and installation FAQs) is available on the TIPS CAD Software webpage

<https://www.tips.osmre.gov/software/CADSupportTeam.shtm>.