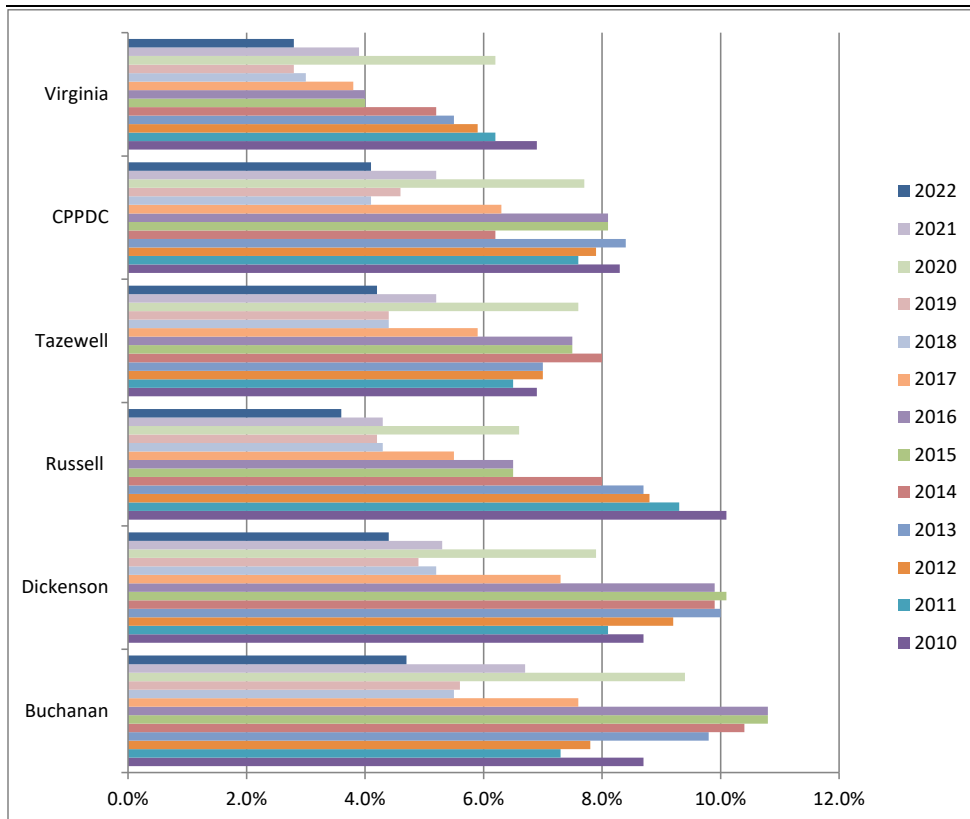


Average Unemployment Rates
2000-2022

Year	Buchanan	Dickenson	Russell	Tazewell	CPPDC	Virginia
2000	5.8%	5.8%	5.1%	5.1%	5.3%	2.3%
2001	6.0%	7.0%	6.4%	4.9%	5.8%	3.2%
2002	7.1%	7.8%	6.3%	5.8%	6.4%	4.2%
2003	7.0%	8.4%	6.2%	5.4%	6.3%	4.1%
2004	5.6%	6.1%	5.7%	4.6%	5.3%	3.7%
2005	5.3%	6.3%	5.7%	4.5%	5.2%	3.5%
2006	4.9%	5.1%	5.9%	3.9%	4.8%	3.0%
2007	4.9%	5.2%	5.1%	4.5%	4.8%	3.1%
2008	5.0%	5.8%	5.8%	4.4%	5.0%	4.0%
2009	8.7%	8.8%	10.7%	7.7%	8.8%	6.9%
2010	8.7%	8.7%	10.1%	6.9%	8.3%	6.9%
2011	7.3%	8.1%	9.3%	6.5%	7.6%	6.2%
2012	7.8%	9.2%	8.8%	7.0%	7.9%	5.9%
2013	9.8%	10.0%	8.7%	7.0%	8.4%	5.5%
2014	10.4%	9.9%	8.0%	8.0%	6.2%	5.2%
2015	10.8%	10.1%	6.5%	7.5%	8.1%	4.0%
2016	10.8%	9.9%	6.5%	7.5%	8.1%	4.0%
2017	7.6%	7.3%	5.5%	5.9%	6.3%	3.8%
2018	5.5%	5.2%	4.3%	4.4%	4.1%	3.0%
2019	5.6%	4.9%	4.2%	4.4%	4.6%	2.8%
2020	9.4%	7.9%	6.6%	7.6%	7.7%	6.2%
2021	6.7%	5.3%	4.3%	5.2%	5.2%	3.9%
2022	4.7%	4.4%	3.6%	4.2%	4.1%	2.8%

Source: Virginia Employment Office

Average Unemployment Rates
2010-2022



Source: Virginia Employment Office