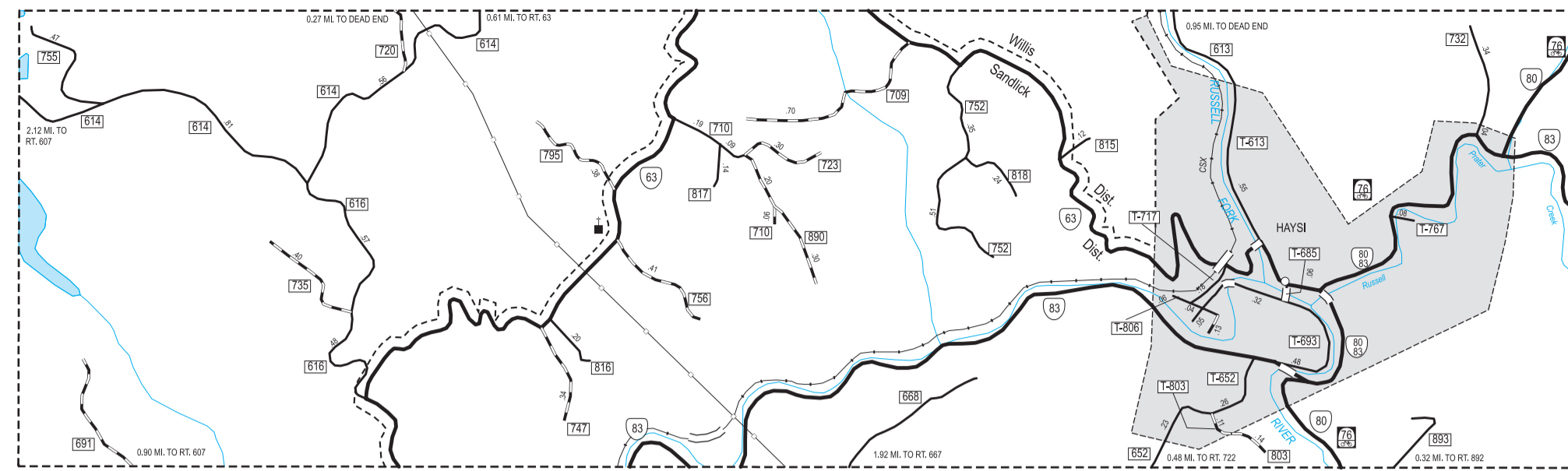
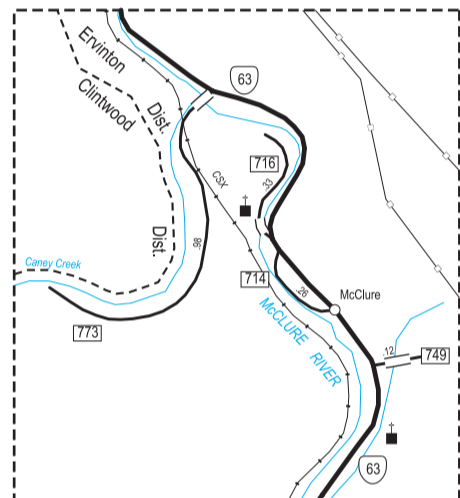


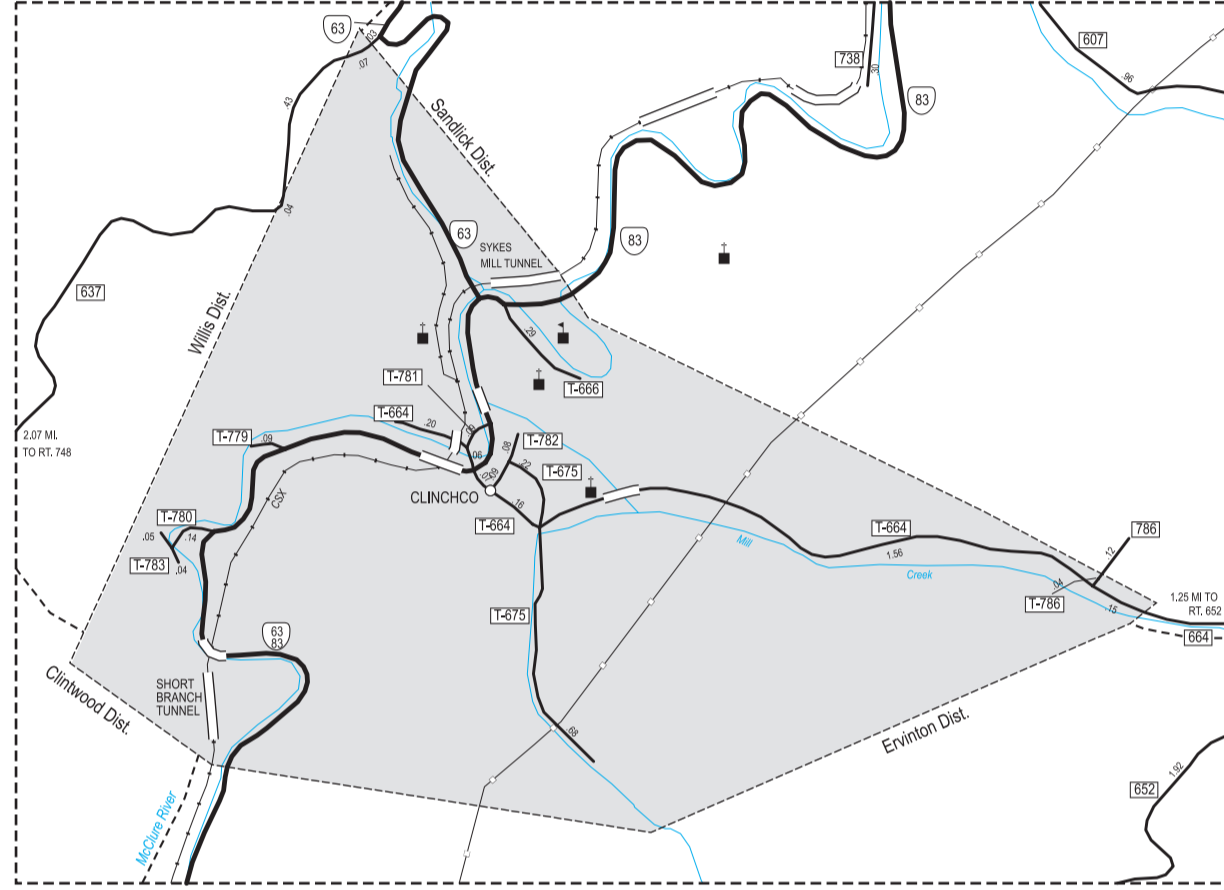
1
CLINTWOOD AREA
four times map scale
see notation on map cover for distance annotation



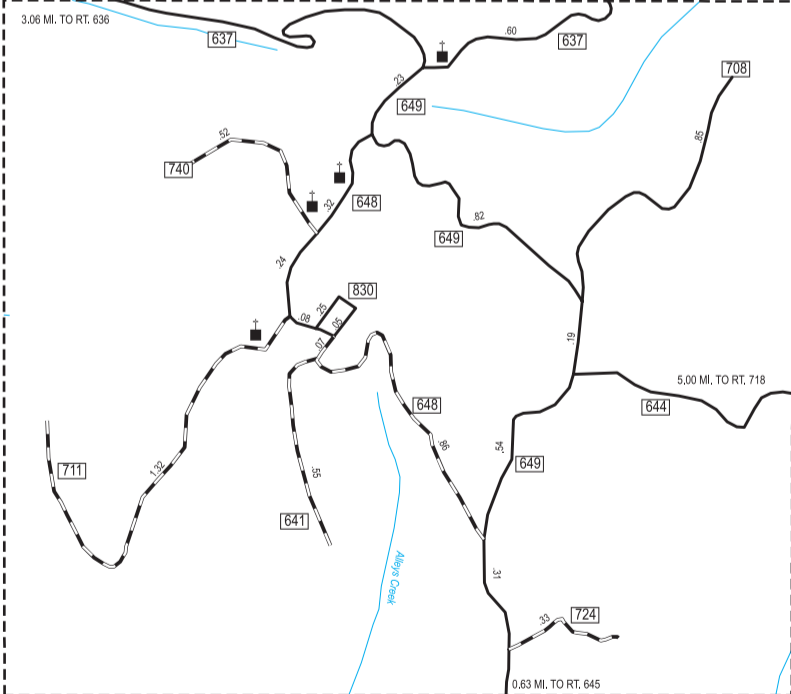
3
HAYSIA AREA
four times map scale
see notation on map cover for distance annotation



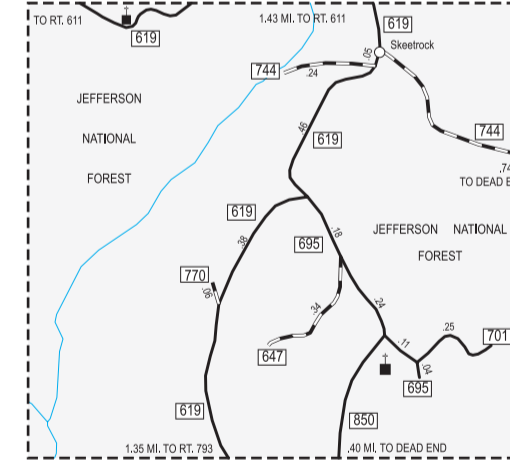
6
McCLURE AREA
four times map scale
see notation on map cover for distance annotation



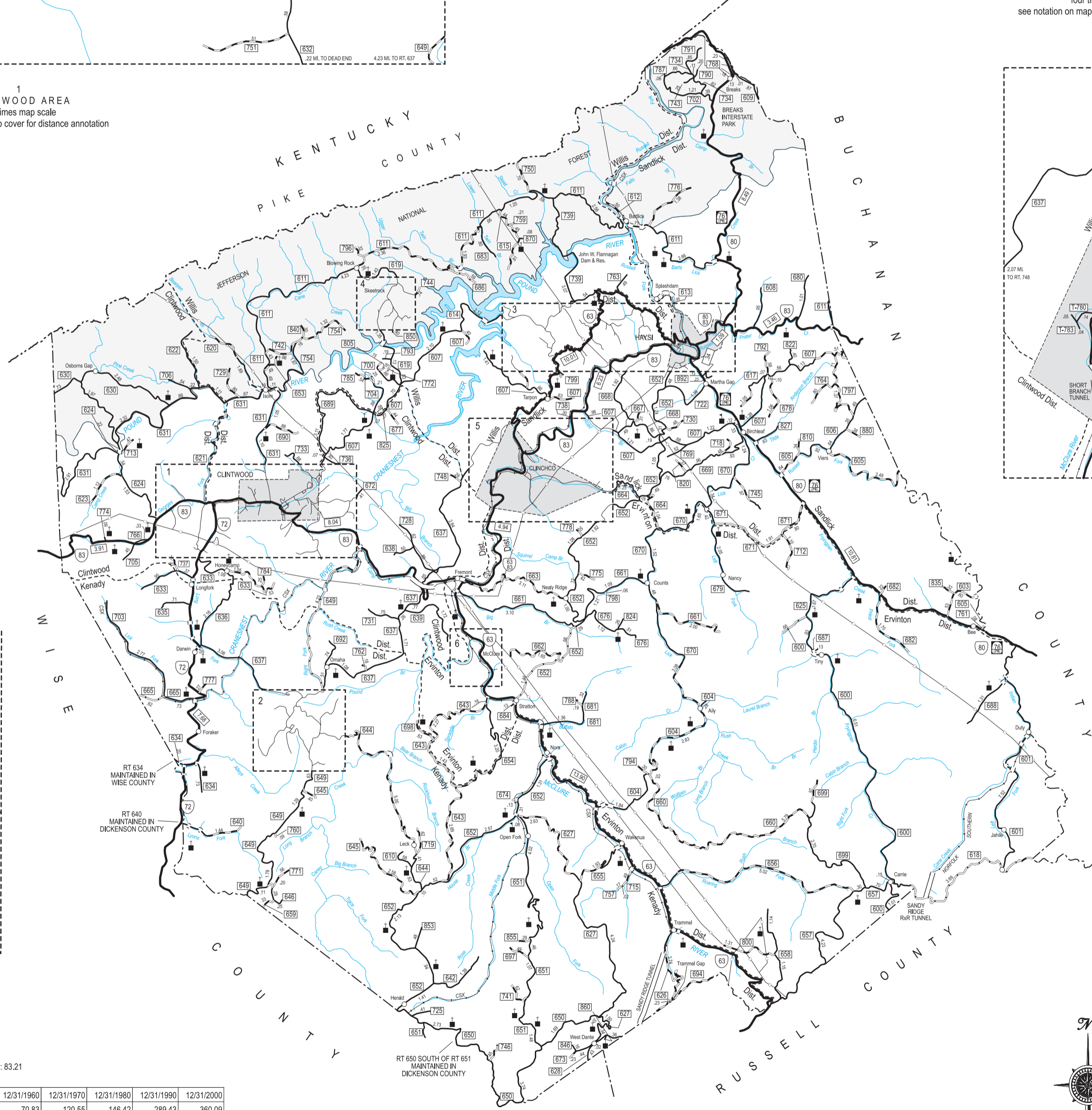
5
TOWN OF CLINCHCO
four times map scale
see notation on map cover for distance annotation



2
SOUTHWEST OF OMAHA AREA
four times map scale
see notation on map cover for distance annotation



4
SKEETROCK AREA
four times map scale
see notation on map cover for distance annotation



TOTAL PRIMARY MILEAGE IN COUNTY 12/31/00: 83.21

SECONDARY MILEAGE TABULATION

TYPE	7/1/1932	7/1/1934	7/1/1941	TYPE	12/31/1950	12/31/1960	12/31/1970	12/31/1980	12/31/1990	12/31/2000
BIT.SUR.PAVED	1.50	2.25	4.84	HARD SURFACE	26.10	70.83	120.55	146.42	289.43	360.09
GRAVEL.SOIL.ETC.	0.00	24.55	90.39	ALL WEATHER SURFACE	141.63	246.28	209.48	201.36	100.17	38.25
GRADED & DRAINED	56.90	163.80	148.47	LIGHT SURFACE	59.09	15.57	40.64	36.50	7.88	4.41
UNIMPROVED	248.70	168.66	130.42	UNSURFACED	160.10	55.17	0.72	0.00	0.00	0.00
TOTAL MILEAGE	307.10	359.26	373.92	TOTAL MILEAGE	386.92	387.85	371.39	384.28	397.48	402.75

- ROAD CLASSIFICATIONS**
- Divided Highway (Interstate)
 - Hard Surface
 - All Weather Surface
 - Light Surface
 - Unsurfaced
- HIGHWAY ROUTE SIGNS**
- Interstate Highway
 - US Highway
 - VA Primary Highway
 - VA Secondary Highway
 - Frontage Road
 - Forest Highway
 - US Bicycle Route
- RAILROADS**
- Single Track
 - Two or More Tracks
 - Regional Metro
- BOUNDARIES**
- State Line
 - County Line
 - Magisterial District Line
 - Incorporated Town or City
 - Park, Reservation, or Forest Boundary
- CITY AND VILLAGE CENTERS**
- State Capital
 - County Seat
 - Town or Village
- MISCELLANEOUS**
- Place of Worship
 - School
 - Park & Ride Lot
 - Transmission Line
 - Bridge
 - Primary Road Distances
- PORTS**
- Seaport
 - Military Airport
 - Commercial Airport
 - Other Airport
- Request for information on roads shown on this map should be addressed to
Bristol District Administrator, Virginia Department of Transportation
P.O. Box 1768, Bristol, VA 24203
276-669-6151 (TTY users, call 711)
- DISTANCES SHOWN ON MAP MAY NOT BE OFFICIAL DISTANCES.
Distances shown on Primary Roads are between Primary Road intersections and/or county lines. Distances shown on Secondary Roads are between intersections and corporate limits or county lines. Magisterial District Boundary lines shown parallel to features such as roads, streams, etc. are on the center line of such features. The accuracy or completeness of this map is not guaranteed or warranted.
Map depicts state-maintained highway network as of January 1, 2001.
Copyright © 2004 by Commonwealth of Virginia Department of Transportation, All Rights Reserved

DICKENSON COUNTY, VA

VDOT
Virginia Department of Transportation

COUNTY ROAD MAP

DICKENSON COUNTY

0 1 2 3 4
0 1 2 3 4 5 6
MILES
KILOMETERS

AN INVENTORY OF STATE-MAINTAINED ROADS
DICKENSON COUNTY, VA